

Proposed Site Location Plan Within New Development

Runwell - St Luke's - One Form Entry Primary School & Nursery





Proposed Site Plan

Runwell - St Luke's - One Form Entry Primary School & Nursery





Proposed Primary School First Floor Plan



Proposed Primary School Ground Floor Plan

Proposed Ground Floor Analysis

- The main visitor entrance faces the vehicular access.
- The entrance lobby is located between the general office which allows for passive supervision of visitors.
- The heads office, staff WC areas and sick bay are also located in this area to provide the main staff areas in close vicinity of the main visitor entrance.
- The library and SEN room have been located at the centre of the building to create a 'heart-space' for the school.
- The staff room area and reprographics have been placed adjacent to this area so that it is in close proximity to the other admin areas and also the stair case and lift to the first floor teaching accommodation.
- The location of the staff room also allows for passive supervision of the main pupil entrance to the north of the building as well as staircase areas and the hard outdoor PE areas during break times.
- The main hall, kitchen areas and plant rooms are located to the west of the building, with the servery having a dual purpose as a chair store.
- The kitchen and plant location provides simple delivery and maintenance access from the car park areas.
- The main hall looks to provide a focal point for the school for both Northern and Southern entrances, while providing access for after school extracurricular activities and by the local community.
- The Eastern side of the building is where the Key Stage One teaching accommodation is located, which are grouped to create the opportunity for cross working between classes
- The reception classroom is located to the rear of the building to allow external access to the undercover play areas, with associated WC areas integrated within the teaching space.
- The other Key Stage One classrooms make use of shared Unisex WC's off the main circulation.

Proposed First Floor Analysis

- The main staircase allows for a small double height atrium space which wraps around the passenger lift.
- This area is envisaged to use an area of curtain glazing, which will flood these areas with light while adding architectural interest.
- The stair landing leads to the circulation areas of the first floor connecting to the group room and the staff work room allowing passive supervision.
- The main circulation for the first floor which is split into two areas.
- The Western side of the first floor sees the second SEN room, as well as the food/science/DT room and associated storage required.
- Adjacent to this is where the pupil toilet provision for the classrooms are located, which like the ground floor are arranged to provide shared Unisex WC's off the main circulation.
- From this area the first floor follows the pairing classrooms strategy as the ground floor, but for Key Stage Two spaces.
- At the end of this area is the external fire escape staircase.



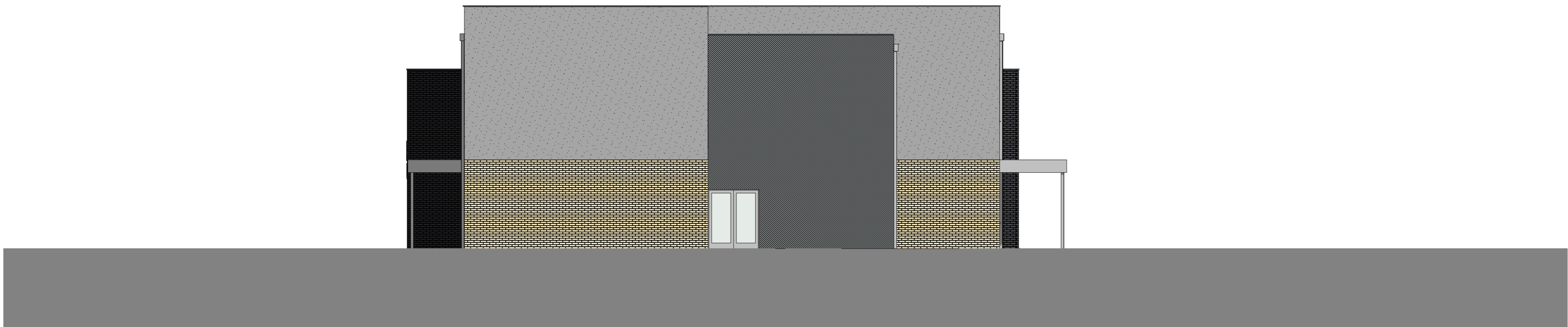
Primary School - PS-01 - South Elevation



Primary School - PS-02 - West Elevation



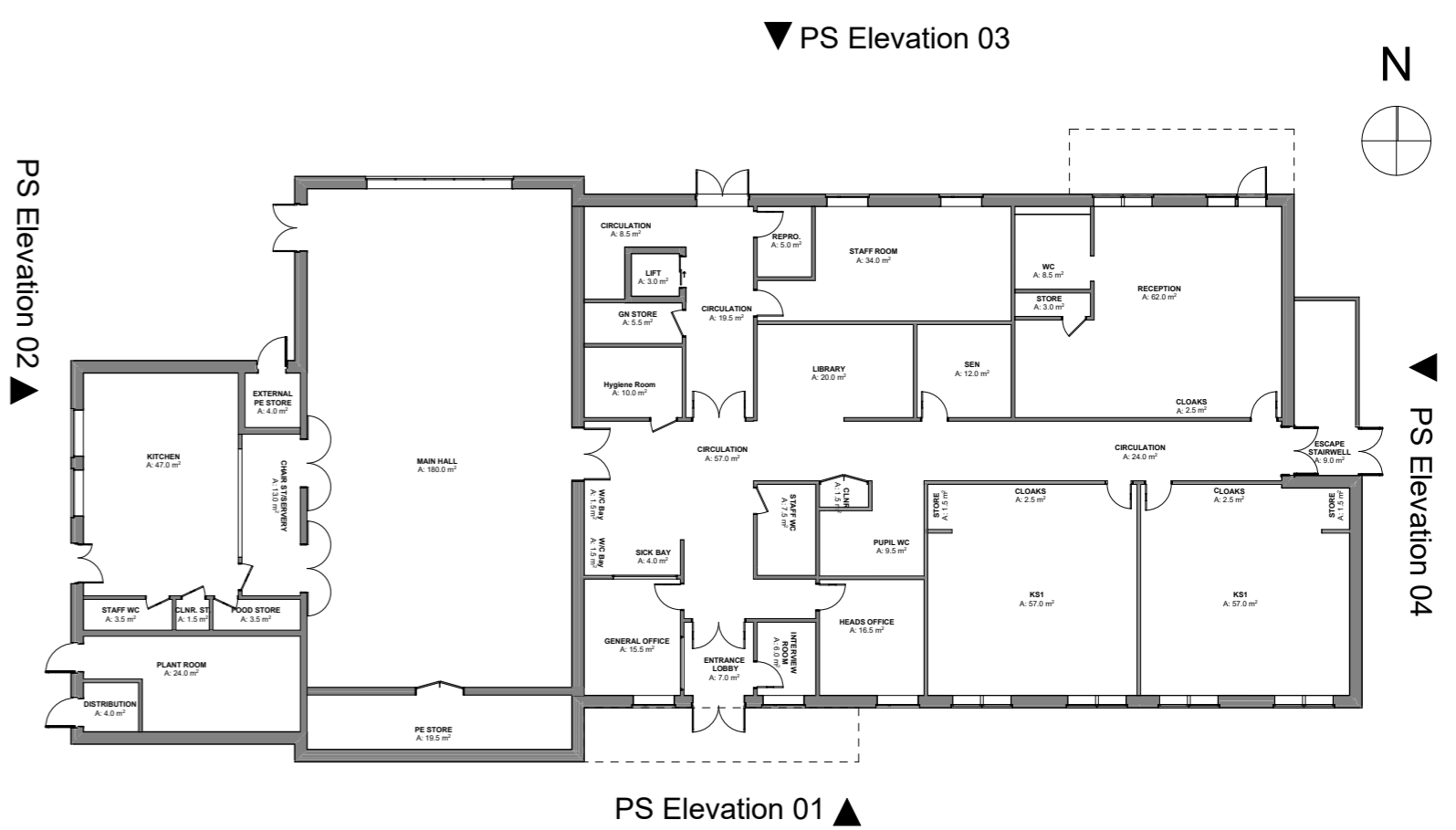
Primary School - PS-03 - North Elevation



Primary School - PS-04 - East Elevation

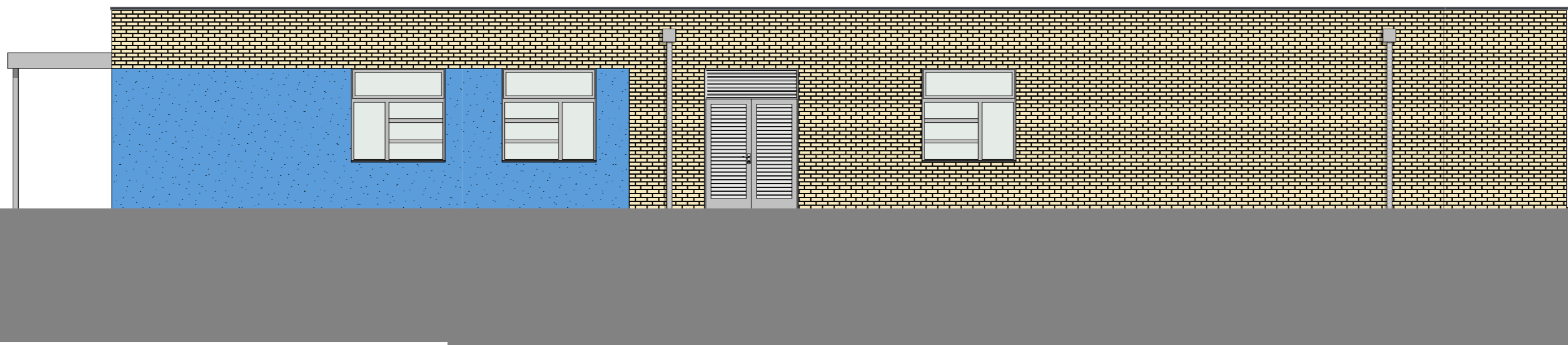
Primary School Elevational Treatment

- The proposed elevational treatments of the new primary school use two primary materials of brickwork and rendered panelling in varying colours to add interest.
- Generally the use of buff multi stock brickwork to first floor level with the render panelling above this point is proposed with a flat roof construction.
- The purpose of this material palette is to differentiate the new primary school and the nursery from the recently constructed St Luke's Park development, which uses primarily red brickwork and white timber weatherboarding with pitched roofs.
- The Southern elevation which is intended to be the main visitor entrance to the primary school, uses the main hall as a focal point which is storey and a half height due to its use. This area is intended to be highlighted in a contrasting in dark grey brickwork, compared to the lighter buff multi stock brickwork around the rest of the perimeter of the school.
- Above first floor level the grey will blend in with the proposed grey window colour, while a contrasting colour render has been shown between windows to signify different spaces. This has been indicatively shown as a green, but following further consultation with the future academy this could be changed to suit their branding.
- The same concept is followed on the Northern elevation. The large glazed area to the hall signifies the main pupil entrance, while also providing interest from the local development.
- The staircase areas will also be finished with curtain glazed to add interest, providing a clear entrance point for students.
- The reception classroom is located to the left of the elevation with the external access to the undercover play areas.
- The external fire escape staircase is intended to be clad in a perforated metal cladding which would tie in with the colour of the external windows and doors.

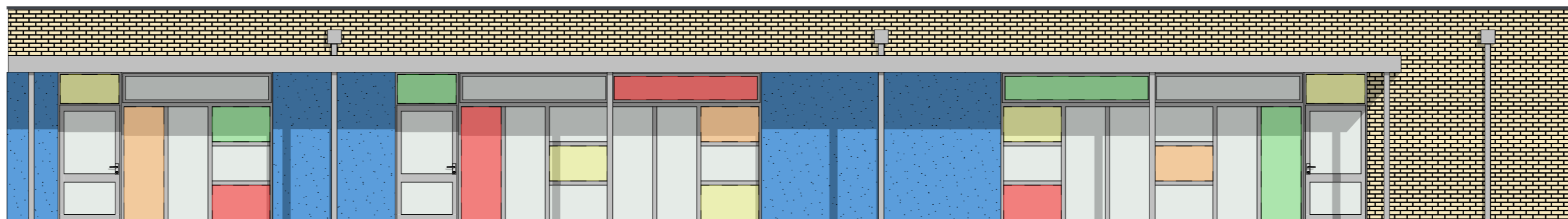




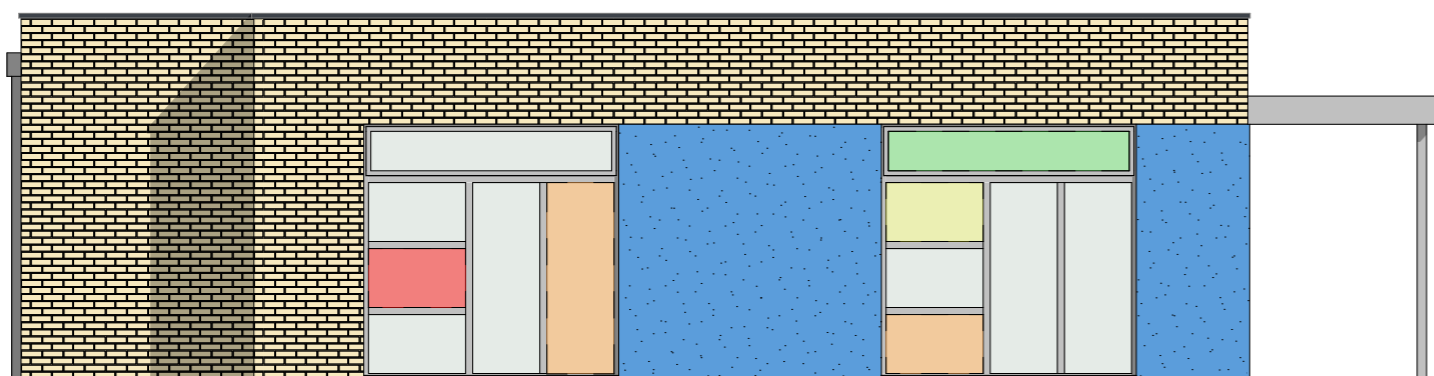
Nursery Floor Plan



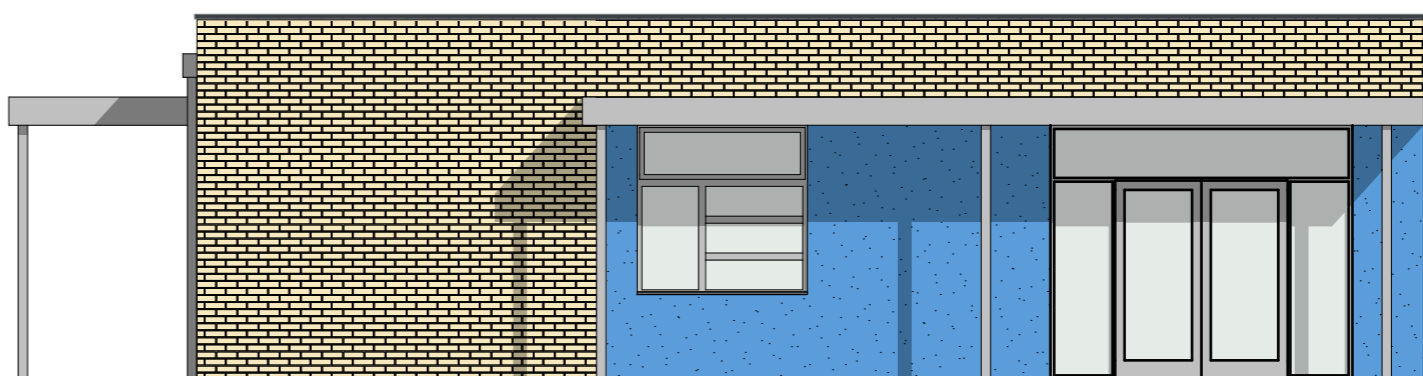
Nursery - NB-01 - South Elevation



Nursery - NB-03 - North Elevation



Nursery - NB-02 - East Elevation



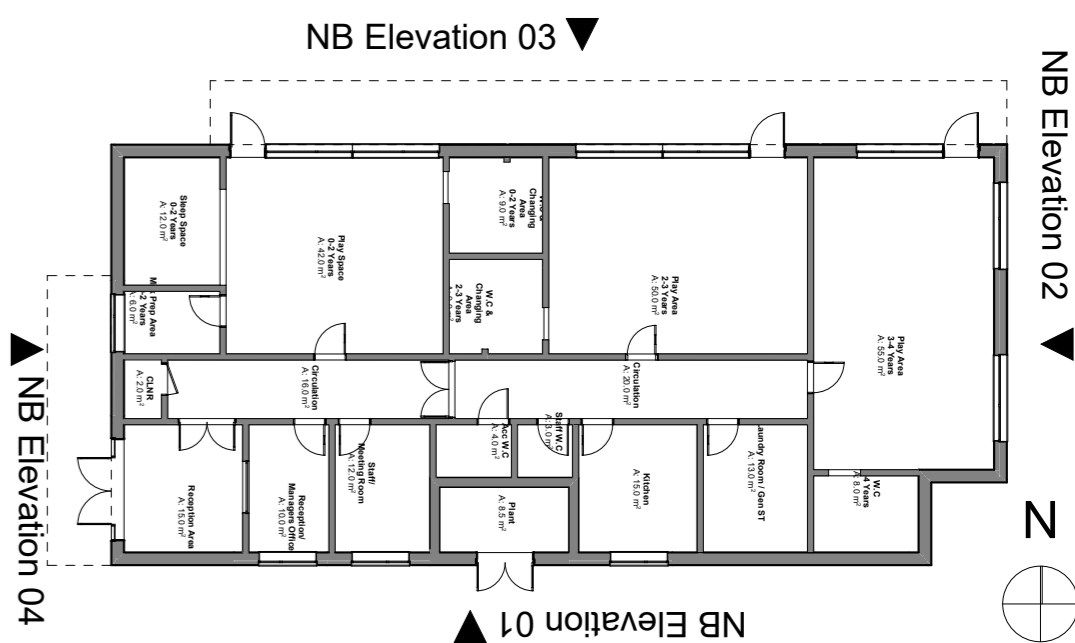
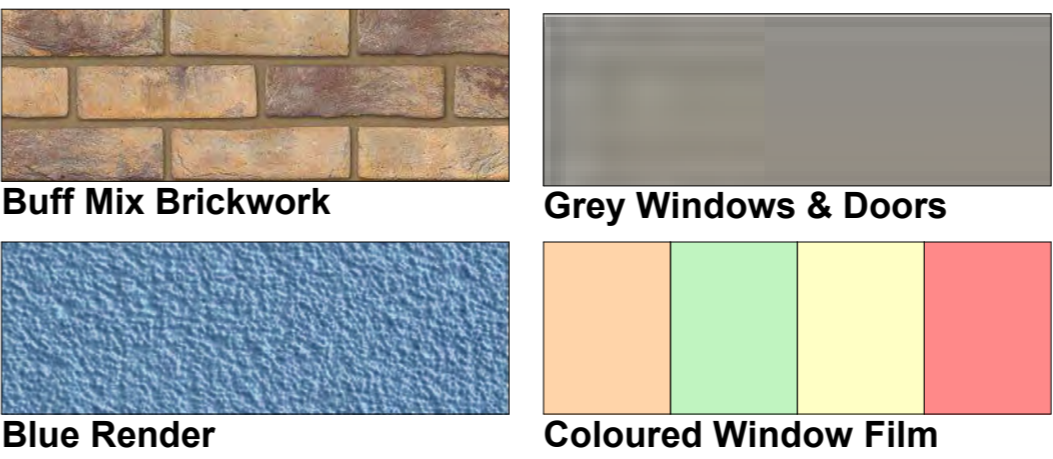
Nursery - NB-04 - West Elevation

Nursery Floor Plan Layout Analysis

- The main entrance to the nursery has been located so that it gives a complete separation from the primary school.
- The reception area is adjacent to the reception/managers office with an internal window to allow supervision of visitors into the building.
- The staff/meeting room has been placed in this area to keep all the admin spaces in one place.
- The 0-2 play space has been placed directly off these spaces to provide quick access when required by staff. Within this area the milk prep area and sleep space are connected directly off the play space.
- The WC and changing areas have been placed between the two play areas as provides better separation between the year groups.
- Each playroom has its individual toilet areas directly off the room, with four toilets shown on play spaces 0-2 and 2-3, one of these could be removed and replaced with a changing bed if required.
- The 3-4 year play area has been placed at the Eastern side of the building to give a clear progression of the children as they move through the nursery year groups.
- Each playroom has been provided with external access to undercover play areas which will be essential for the children attending the nursery, allowing free flow movement between spaces.
- Staff and accessible WC's have been placed opposite these areas within the main circulation, as well as plant kitchen and laundry rooms.
- The plant room location provides simple maintenance access from the car park areas when required.

Nursery Elevational Treatment

- The proposed elevational treatments of the nursery utilises as similar material palette as the new primary school in terms of the two primary materials of brickwork and rendered panelling.
- A different colour render has been used to differentiate the two buildings, but the same multi stock brickwork has been used for consistency.
- The coloured render has been indicatively shown as a blue for the nursery, but further consultation with the future nursery provider could identify a specific colour to match their branding.
- The Northern elevation is where the external access from the playrooms is located, which opens out onto the undercover play areas.
- Full height glazing is proposed in these areas to allow views out for the children, while providing natural ventilation.
- Coloured film has been intended to some of the glazing panes, providing splashes of colour internally and externally.





Primary School Visualisation



Nursery Visualisation