

SCHOOL DEVELOPMENT: NAZEING PRIMARY SCHOOL

Welcome to this public exhibition. Essex County Council and its team are pleased to present proposals to replace the existing poor condition temporary buildings that were installed on the school site over 20 years ago with a new permanent classroom block to suit the existing number of students.

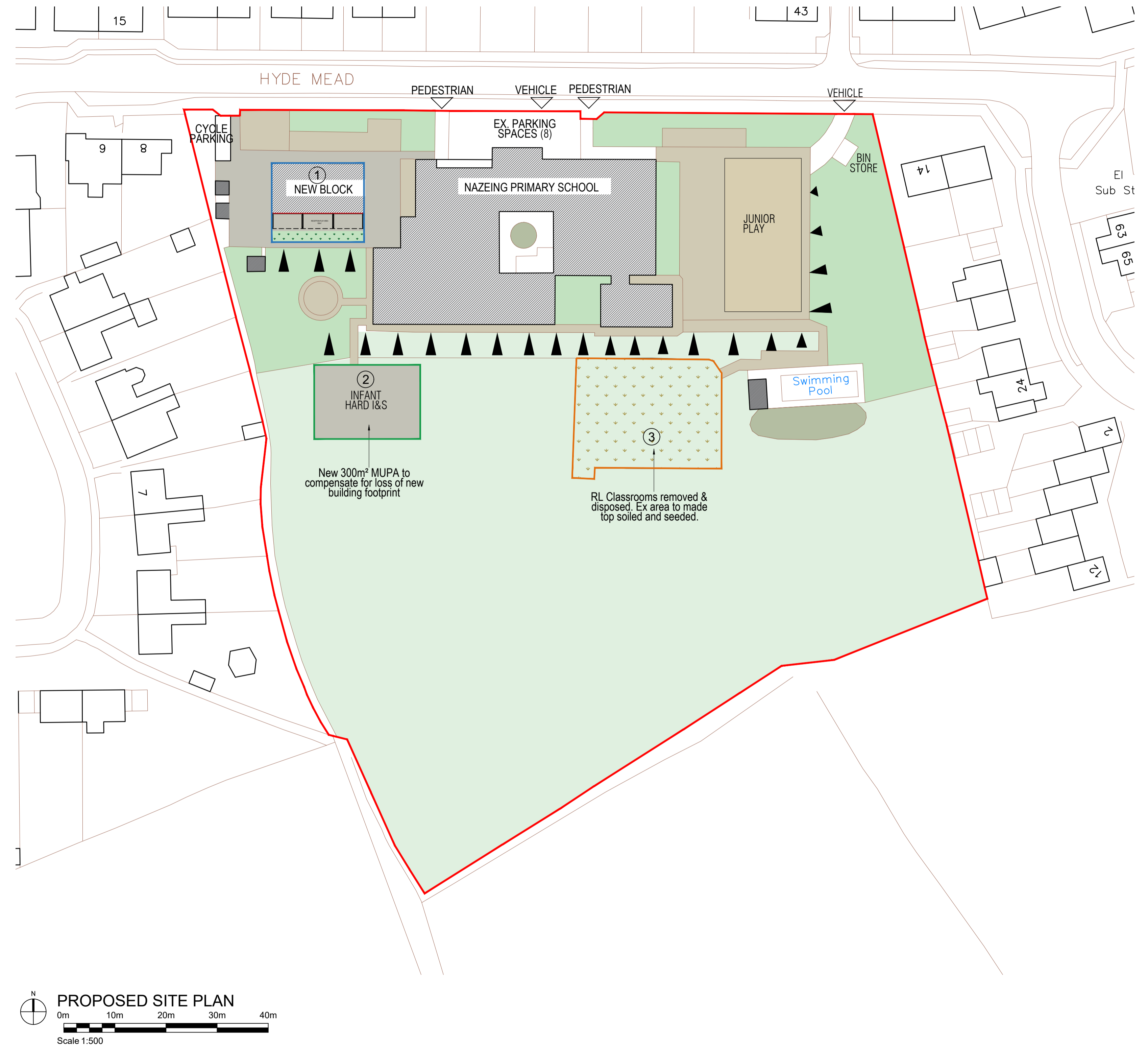
This online exhibition is being held to inform the local residents about the emerging proposals and to give the opportunity to provide feedback. We value your input and feedback forms are available for you to complete. We thank you for your interest.

Ingleton Wood (Architects) are working with Beardwell Construction (Design and Building Contractors) to design and deliver the new school facilities. The proposals have been developed in close collaboration with the leadership team at the school.

This proposal seeks to provide permanent teaching facilities to replace the two existing, poor condition classroom blocks. This development will provide the school with a modern, purpose-built teaching facility. The new classroom block will feature energy efficient technology such as PV panels and air source heat pumps to reduce the overall carbon footprint which will not only enhance the existing school but ensure that pupils have an improved learning environment.

KEY OF SPACES

- ① - Line denotes extent of new 167m² teaching block & 100m² associated play area.
- ② - Line denotes area of new 300m² MUGA.
- ③ - Line denotes area of block removal to receive top soil and seeding.

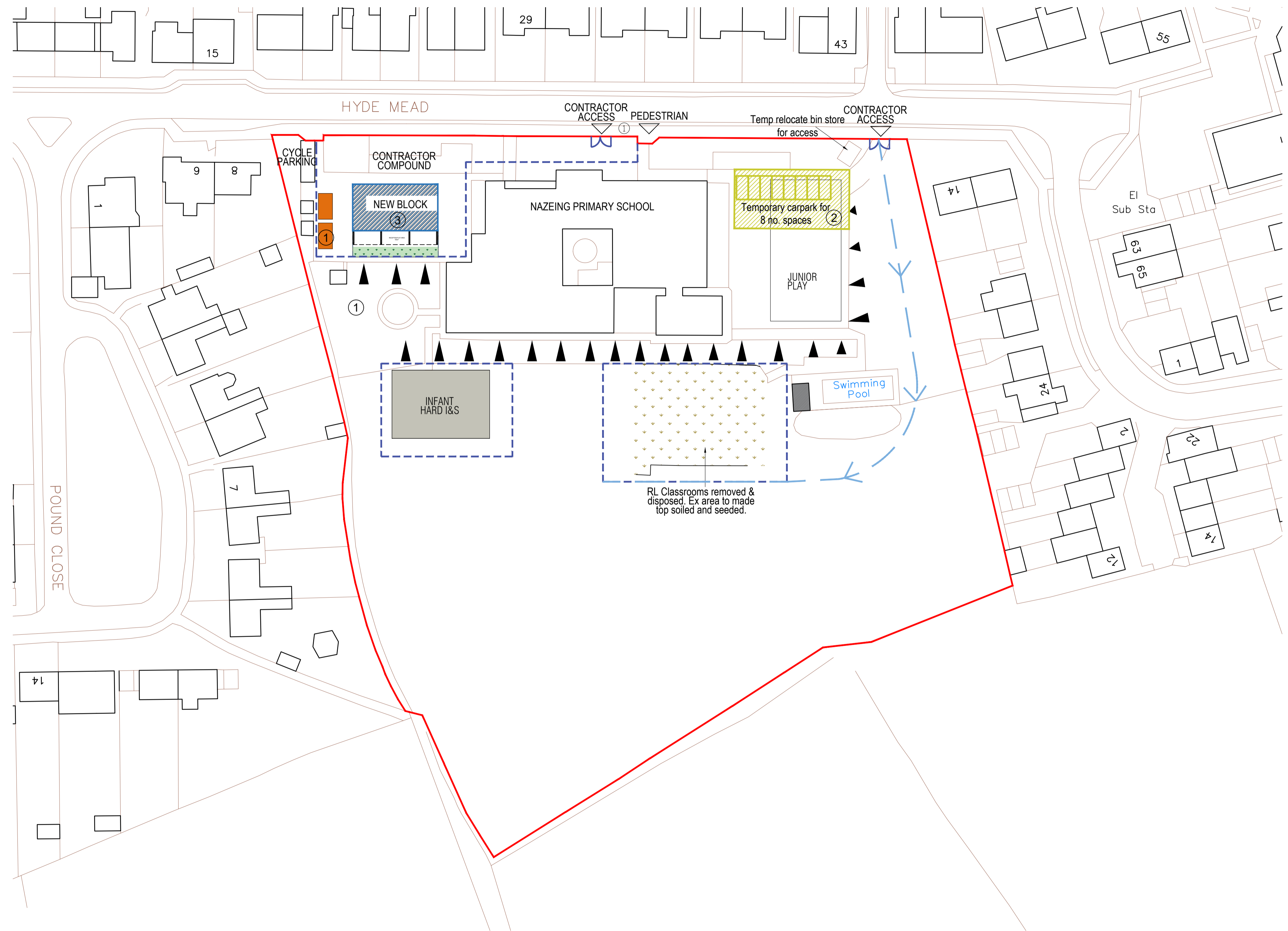


SCHOOL DEVELOPMENT: NAZEING PRIMARY SCHOOL

There will be a letter drop prior to the works commencing and at other key times in the programme to ensure residents are kept informed throughout the project.

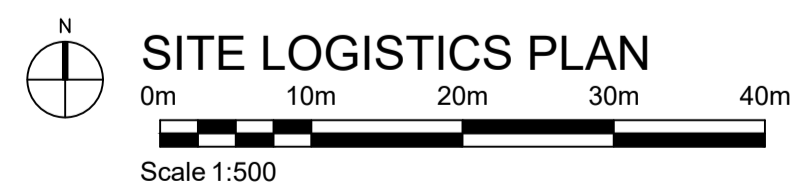
All contractor parking will be within the site compound to prevent traffic issues with deliveries and school access at peak hours.

Deliveries will be scheduled to avoid the school's peak/busy hours to ensure that pick up and drop off times will not be disrupted by the works.



KEY OF SPACES

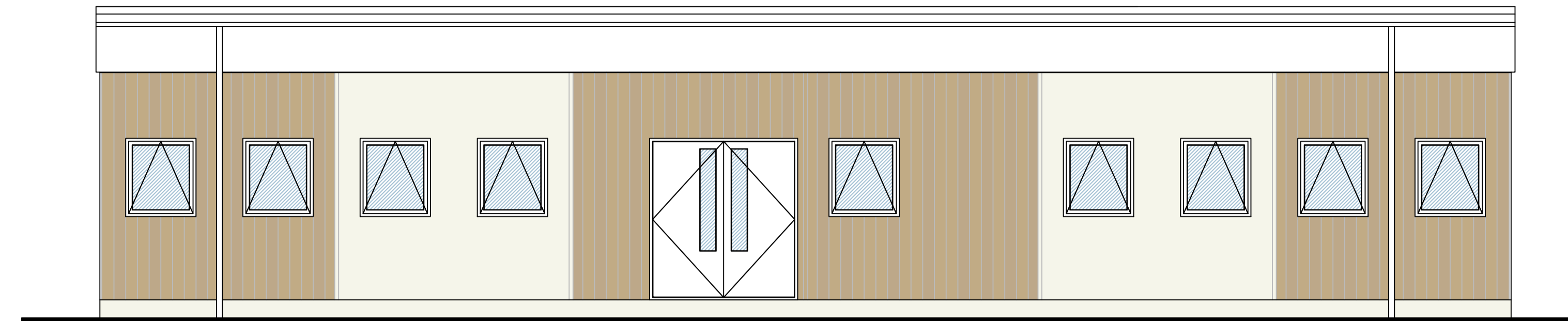
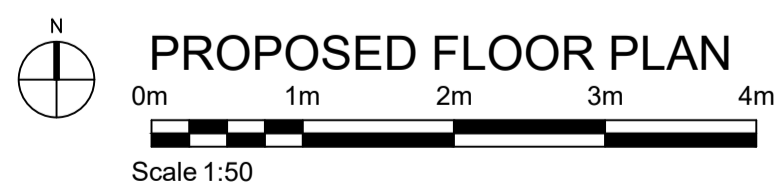
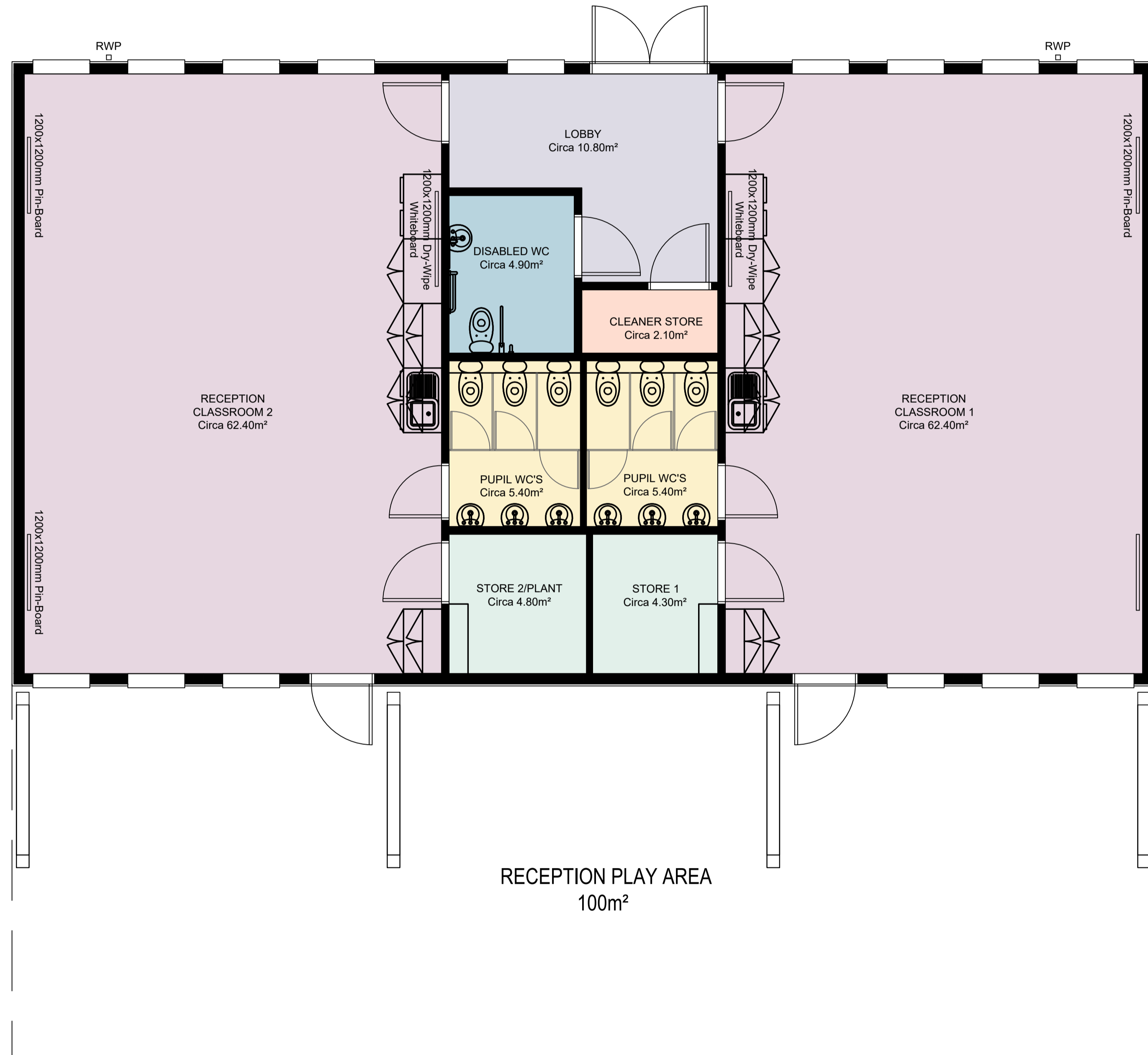
- ① - Site Accommodation
- ② - Temporary Car Park for 8 Vehicles
- ③ - New 167m² Teaching Block
- Proposed site compound - perimeter fencing
- Proposed contractor access routes



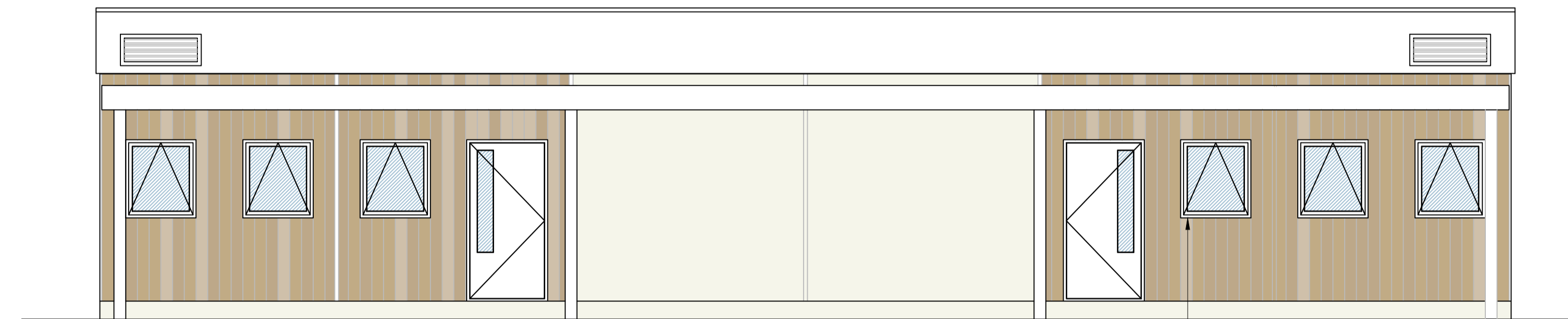
SCHOOL DEVELOPMENT: NAZEING PRIMARY SCHOOL

KEY OF SPACES

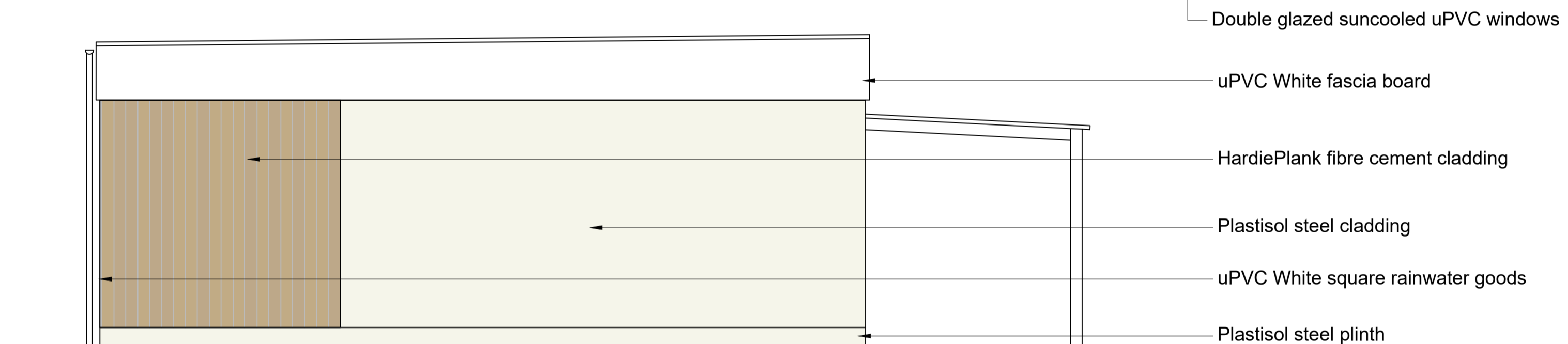
- 2no. Reception Classrooms - 62.4m² (each)
- Lobby - 10.8m²
- Accessible WC - 4.9m²
- 2no. Pupil WC's - 5.4m² (each)
- 2no. Stores - 4.5m²
- Cleaners Store - 2.1m²



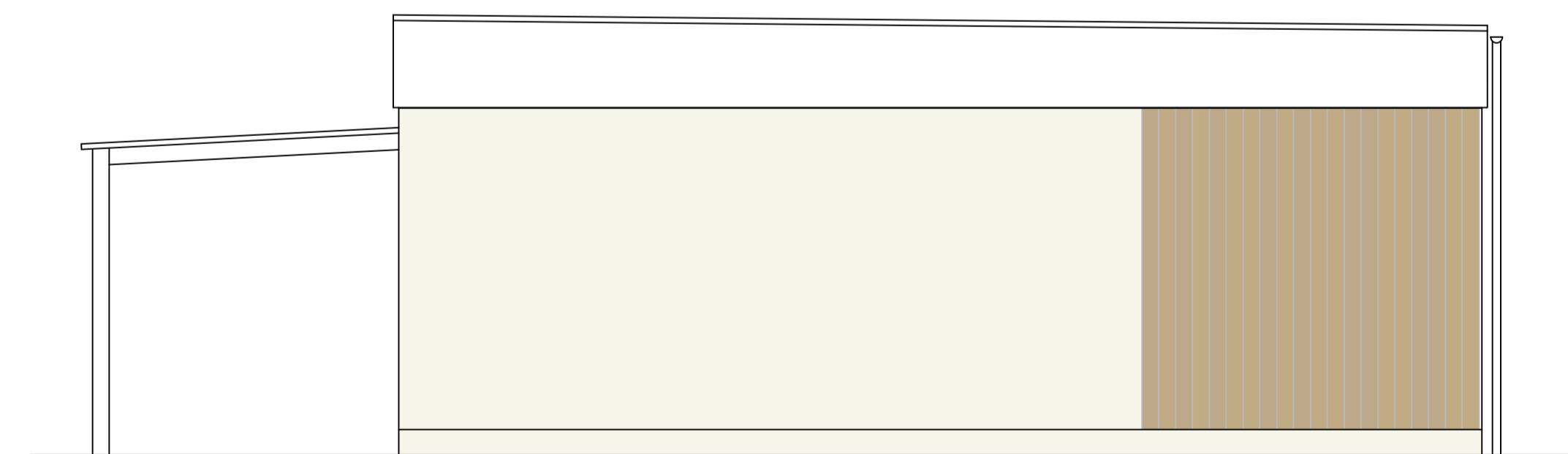
North Facing Elevation



South Facing Elevation



West Facing Elevation



East Facing Elevation

- Double glazed suncooled uPVC windows
- uPVC White fascia board
- HardiePlank fibre cement cladding
- Plastisol steel cladding
- uPVC White square rainwater goods
- Plastisol steel plinth

