

Glenwood School

Background and Location

“Our Vision:

“We set the bar high”

All of us, including our young people, are committed to helping all Learners to be as fulfilled and independent as they can be; we make the greatest possible impact on progress and quality of life by embracing challenges with energy and creativity and by being role models to each other.

Each learner is a well-known and highly valued individual.

Our values:

Staff are highly committed to developing intimate knowledge about each young person, and all those who know them. What we know will change constantly so we will always strive to value all areas of development to enable what we know to evolve as people grow.

“Together we will; respect, achieve and make good choices”

Our Aims:

Our curriculum is learner led so learning for all is individualised and built on our ability to be reflective. Our job is to enable the growth of happy, safe and secure people through nurturing in them a sense of self within a changing social world and through always keeping their best interests at heart.

Our expectations:

We believe that a process of continual learning extends the potential of everyone. We therefore work together to optimise independence and support learners to be as self-reliant as they can be. This involves creating a culture where we always value everyone’s efforts, including those made by our learners as they grow in their relationships with their parents/carers, the wider family and the wider community.

“Achieving independence that fits every individual’s situation and potential”



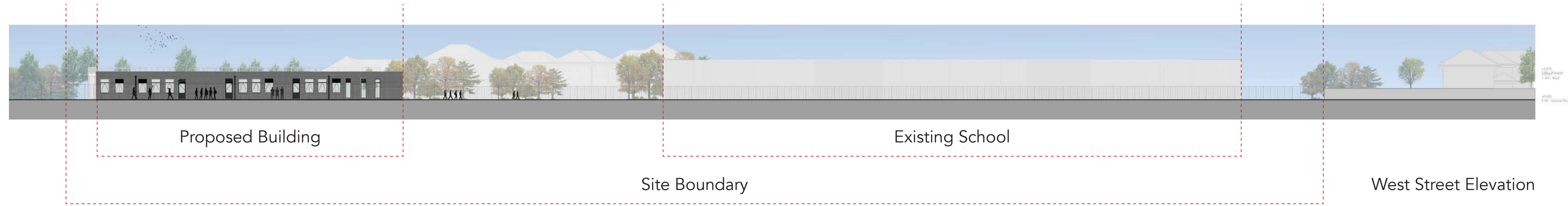
View from Main Entrance



Site Plan

Glenwood School

Technical Design



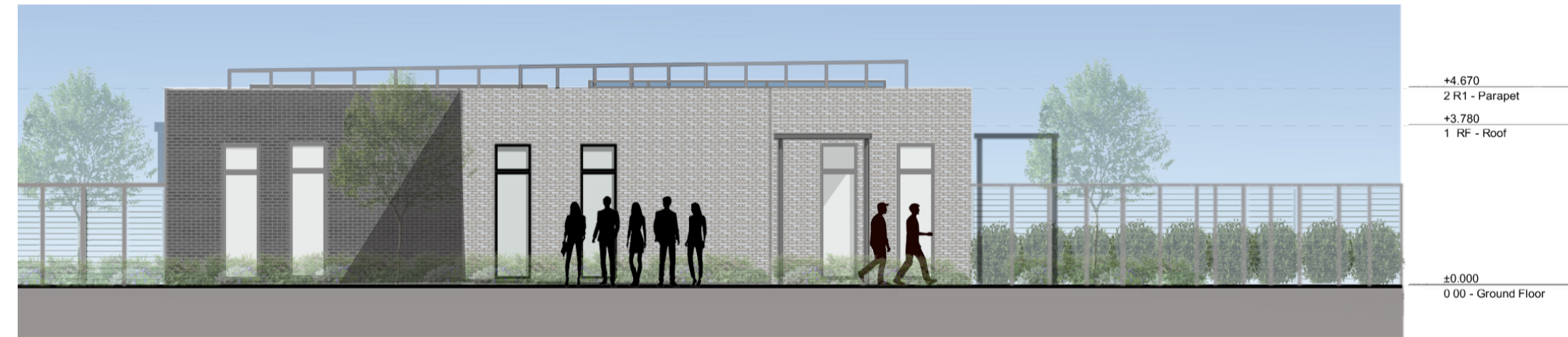
1. Light Grey Brick 2. Charcoal Grey Brick 3. RAL 7021



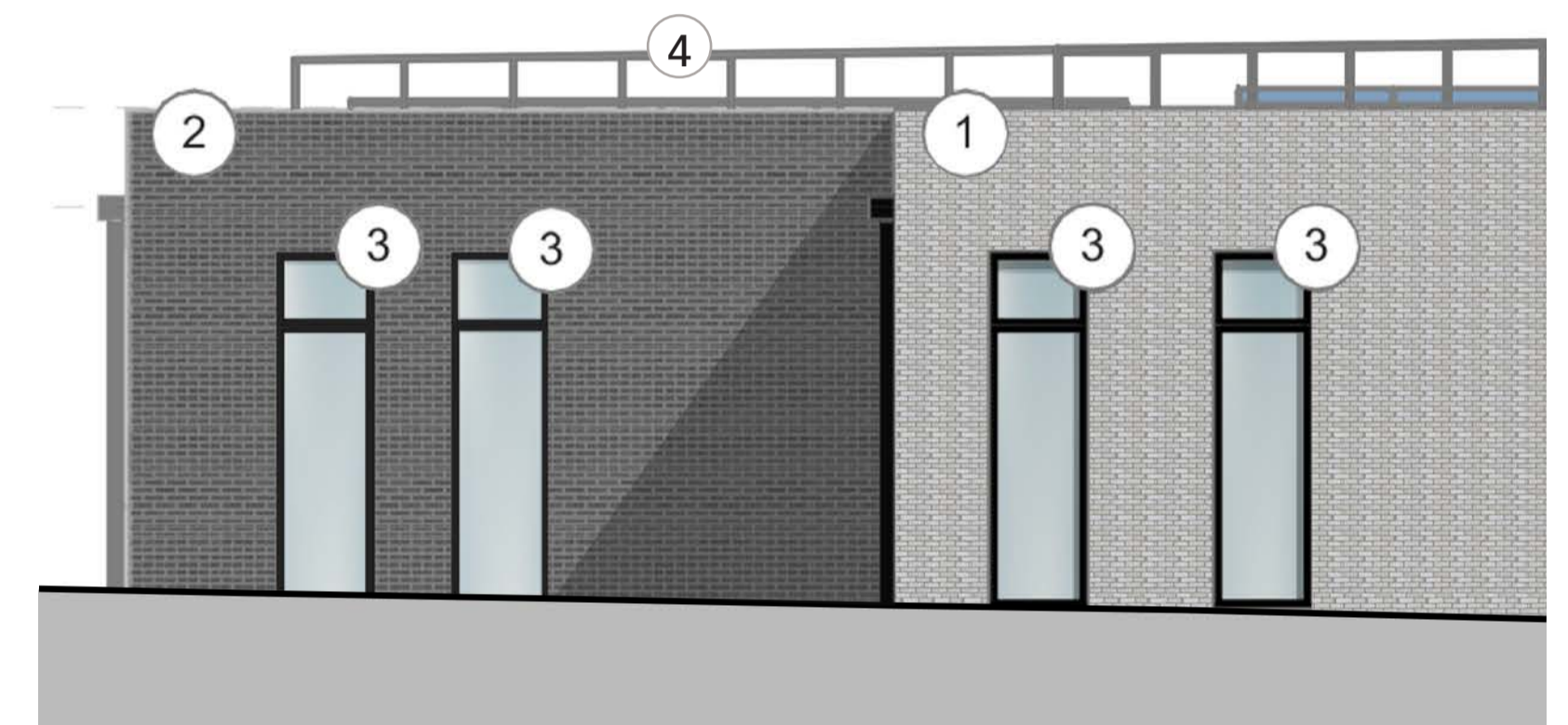
4. Galvanised Metal



East Elevation



South Elevation



South Elevation Material Design



Aerial Visual of Proposed Site



Materiality Precedents

Glenwood School

Landscaping and Access



Site Plan

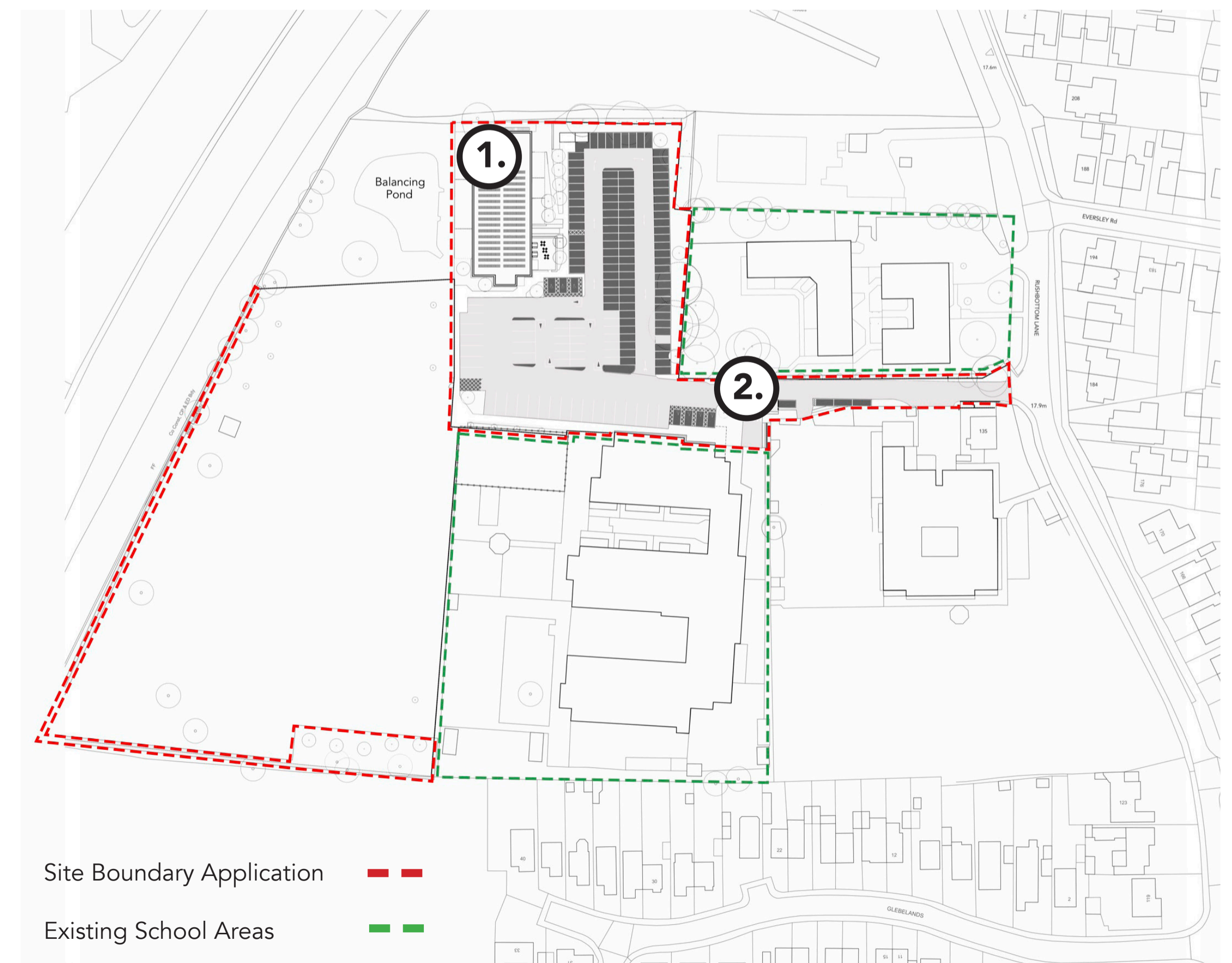
- Site Boundary —
- Main Pedestrian Entrance ▶
- Maintenance Entrance (Vehicle) ▶
- Maintenance Entrance (Pedestrian) ▷
- Pedestrian Entrance ▶
- Proposed Building ■
- Existing Building ■
- Existing Trees ○
- Existing Tree groups ○
- Proposed Tree ●
- Ornamental Shrub / Grass Planting ■
- Proposed Native Hedge Planting ■
- Proposed Native Shurb Mix ■
- Existing Soft Landscape Retained ■



1. Proposed building location.



2. As part of planned works, it is proposed that the access road into Glenwood School carpark will be widened, and the carpark layout rationalised in order to aid in the flow of vehicles on site.



- Site Boundary Application - - -
- Existing School Areas - - -



- 1 Arrival and entrance: welcoming, but calming, offering security and convenient greeting for visitors.
- 2 Dining/servy space that is both secure and open, designed to accommodate the entire student capacity with the inclusion of a secure outdoor dining area. Additionally, the space can be expanded by opening the bi-folding doors to the conference room, integrating both areas and increasing area space.
- 3 A shared sensory space that links both classrooms for all learners, providing them with the opportunity to take a break and engage in sensory activities.
- 4 Secure entry point for supply drop-offs that allows direct access to the kitchen without causing disruptions to the school's teaching and interactive environment.
- 5 Staff spaces that often host visitors are located together near the main entrance to keep access to the rest of the school limited and secure.
- 6 Ensure that access to electrical, mechanical, and public health plant rooms is restricted to external entry points only, thereby enhancing security by preventing student access.
- 7 2no. Hygiene Rooms provide specialist sanitary and washing facilities for all building users.

Proposed Ground Floor Plan