

## SCHOOL DEVELOPMENT: EVERSLEY PRIMARY SCHOOL

Welcome to this public exhibition. Essex County Council and its team are pleased to present proposals to replace the existing poor condition temporary building that was installed on the school site over 20 years ago with a new permanent classroom block to suit the existing number of students.

This online exhibition is being held to inform the local residents about the emerging proposals and to give the opportunity to provide feedback. We value your input and feedback forms are available for you to complete. We thank you for your interest.

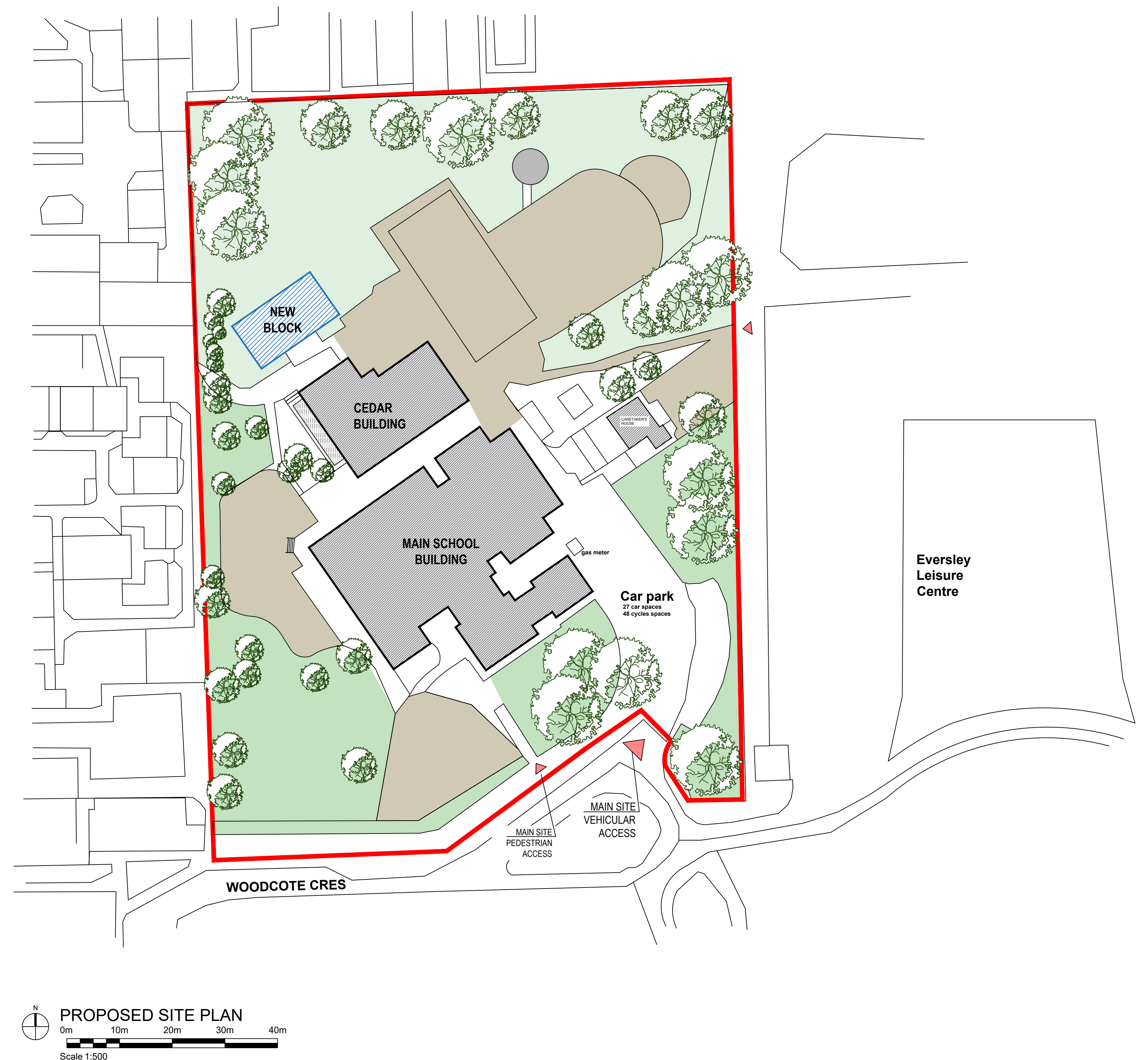
Ingleton Wood (Architects) are working with Beardwell Construction (Design and Building Contractors) to design and deliver the new school facilities. The proposals have been developed in close collaboration with the leadership team at the school.

This proposal seeks to provide permanent teaching facilities to replace the existing, poor condition classroom block. This development will provide the school with a modern, purpose-built teaching facility. The new classroom block will feature energy efficient technology such as PV panels and air source heat pumps to reduce the overall carbon footprint which will not only enhance the existing school but ensure that pupils have an improved learning environment.

### KEY OF SPACES

Line denotes existing relocatable classrooms that will be removed.

Hatch denotes new 167m<sup>2</sup> teaching block









## SCHOOL DEVELOPMENT: EVERSLEY PRIMARY SCHOOL

There will be a letter drop prior to the works commencing and at other key times in the programme to ensure residents are kept informed throughout the project.

All contractor parking will be within the site compound to prevent traffic issues with deliveries and school access at peak hours.

Deliveries will be scheduled to avoid the school's peak/busy hours to ensure that pick up and drop off times will not be disrupted by the works.

### KEY OF SPACES

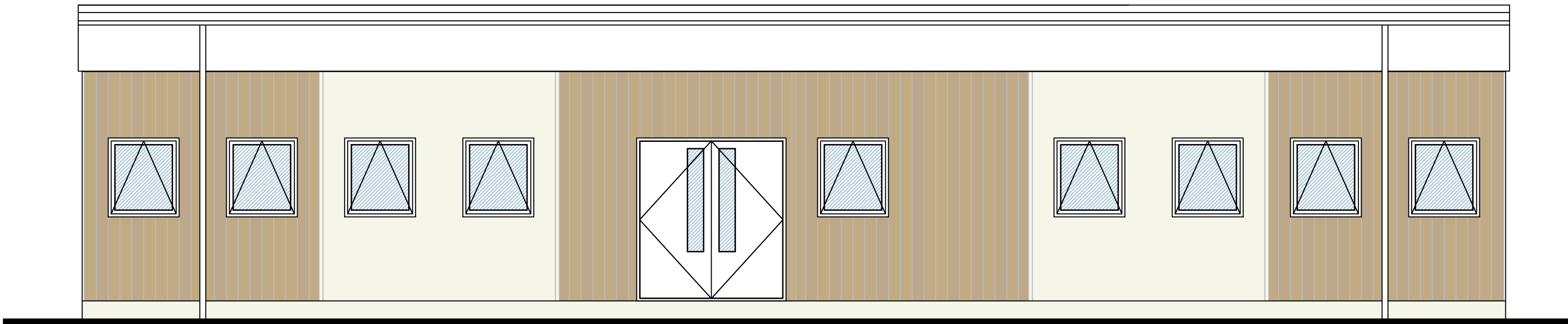
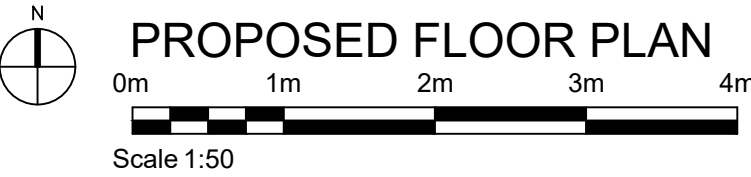
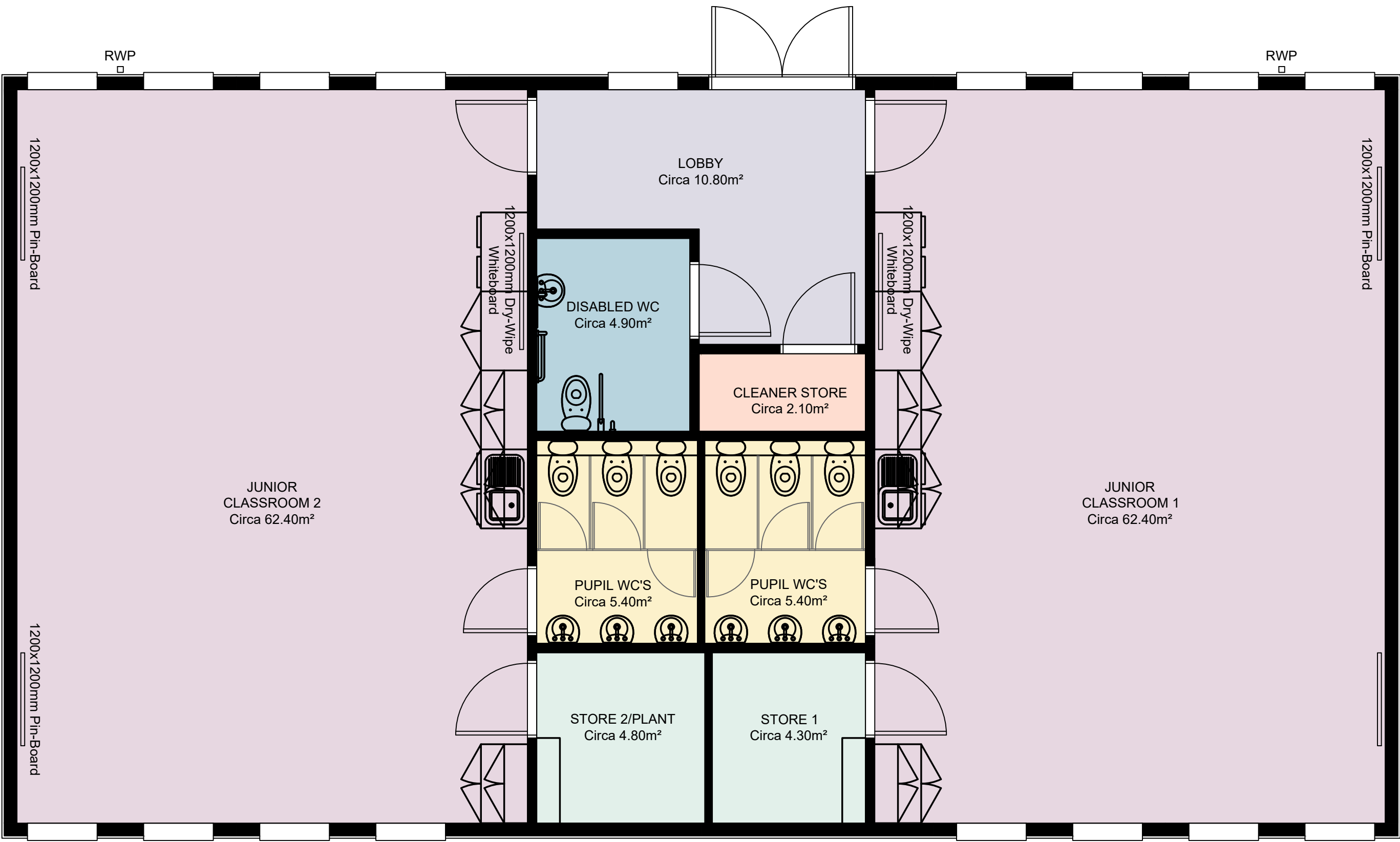
-  Site Accommodation
-  New 167m<sup>2</sup> Teaching Block
-  Proposed site compound - perimeter fencing
-  Proposed contractor access routes



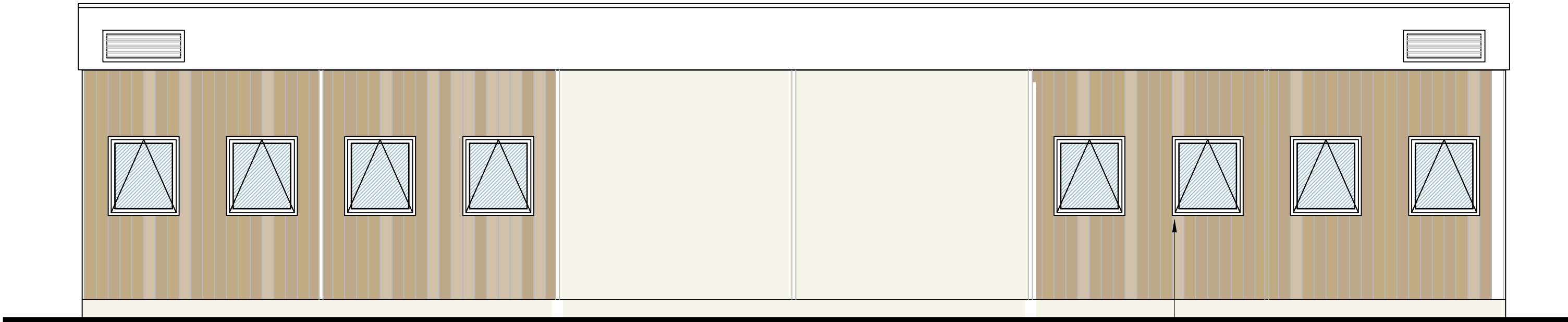
SCHOOL DEVELOPMENT: EVERSLEY PRIMARY SCHOOL

KEY OF SPACES

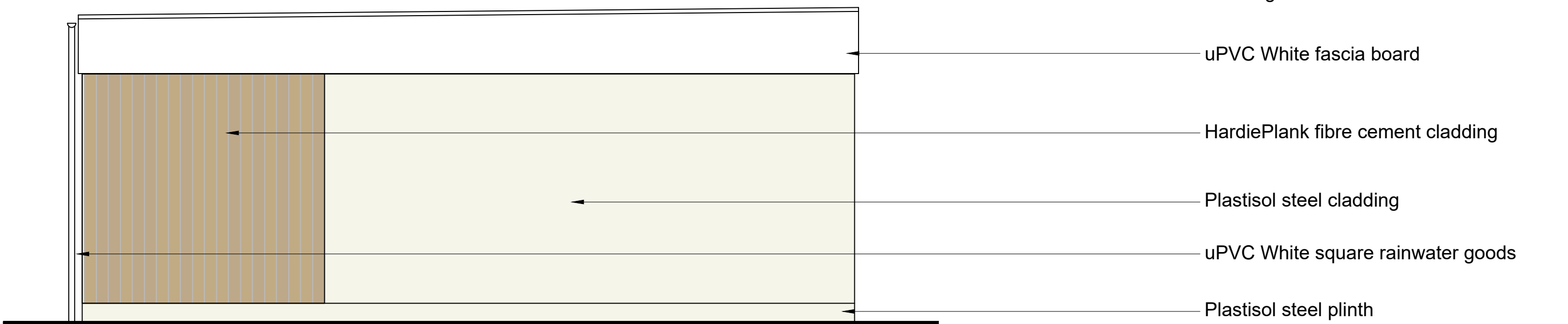
- 2no. Junior Classrooms - 62.4m<sup>2</sup> (each)
- Lobby - 10.8m<sup>2</sup>
- Accessible WC - 4.9m<sup>2</sup>
- 2no. Pupil WC's - 5.4m<sup>2</sup> (each)
- 2no. Stores - 4.5m<sup>2</sup>
- Cleaners Store - 2.1m<sup>2</sup>



South Facing Elevation



North Facing Elevation



East Facing Elevation



West Facing Elevation

