

WALNUT TREE SCHOOL PUBLIC CONSULTATION

STATEMENT OF NEED

The Local Authority (LA) has a statutory duty under section 19 of the Education Act 1996 to provide a suitable full-time education for those children unable to attend school because of illness, exclusion from school and for those who otherwise would not receive an education.

Essex County Council has embarked on a programme of improving the Alternative Provision (AP) estate to ensure that ECC can fulfil its statutory commitment to providing the best possible educational opportunities for all children. This also supports the council's vision of providing the best possible educational opportunities for all children close to their communities.

Demand for AP places exceeds the physical capacity of the current estate. The number of exclusions and medical referrals to Essex AP's has continued to be high with the need to commission more packages of alternative provision from independent providers where capacity has been exceeded by need.

In addition there has been a steady increase in the number of children and young people who have social, emotional and mental health (SEMH) needs in schools both nationally and within Essex. The number of children and young people in Essex with SEMH



STATEMENT OF NEED

as a main category of need has increased by 15% over the last three years; children and young people with SEMH in North East Essex increased by 26% over the same period.

All pupils referred to North East Essex for their education through the LA should be in receipt of full-time education unless the commissioner has agreed that, exceptionally, a full time offer would not be appropriate. The current infrastructure around North East Essex means the AP has very limited space to bring the children on site for their education and in order to accommodate the number of referrals they receive many pupils are offered a reduced timetable. This is particularly noticeable around those pupils referred for medical reasons, most of whom are supported through a team of outreach tutors.

Improvements to the infrastructure and increased capacity will enable the service to teach pupils in groups and minimise the more expensive delivery of one-to-one tuition in off-site settings for those pupils capable of attending a centre.

The current AP site in Colchester at Mile End does not have sufficient capacity to accommodate the number of places commissioned by ECC and there is insufficient space for an expansion. The establishment of a new secondary school on the Paxman Avenue site leaves sufficient capacity to develop a predominantly Primary AP which will be able to accommodate the number of pupils necessary to provide a sufficiency of provision for Colchester. There are no other suitable sites available in the town.

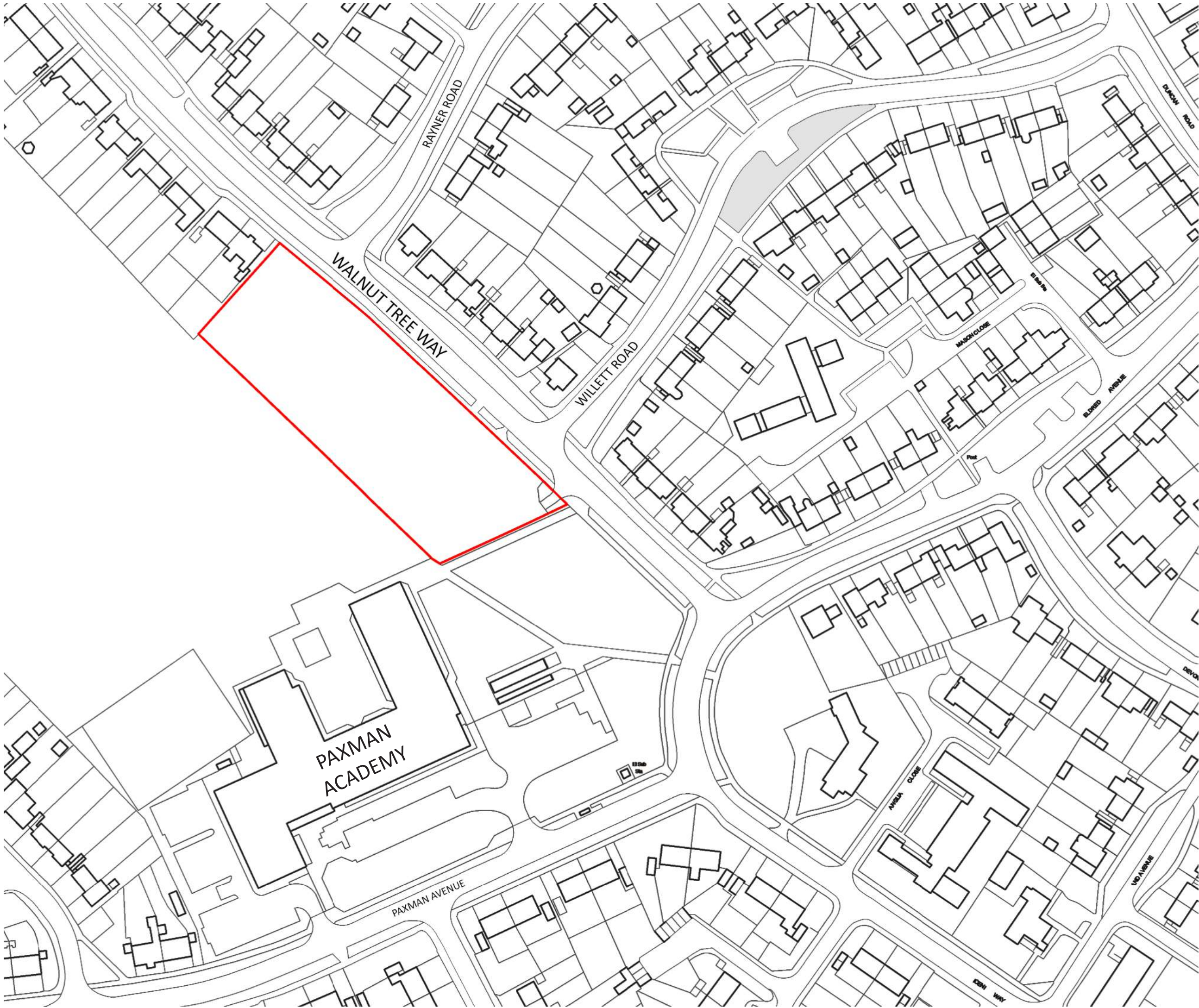
The additional capacity in the proposed new building would allow more pupils to be educated on site which would enable them to receive a significantly improved education offer. Those pupils referred on medical grounds would also be able to access small group settings which should aid their reintegration back to school. As a result, the LA would no longer be at risk of failing to meet its statutory duties.



LOCATION PLAN



SCHOOL LOCATION



SITE PLAN

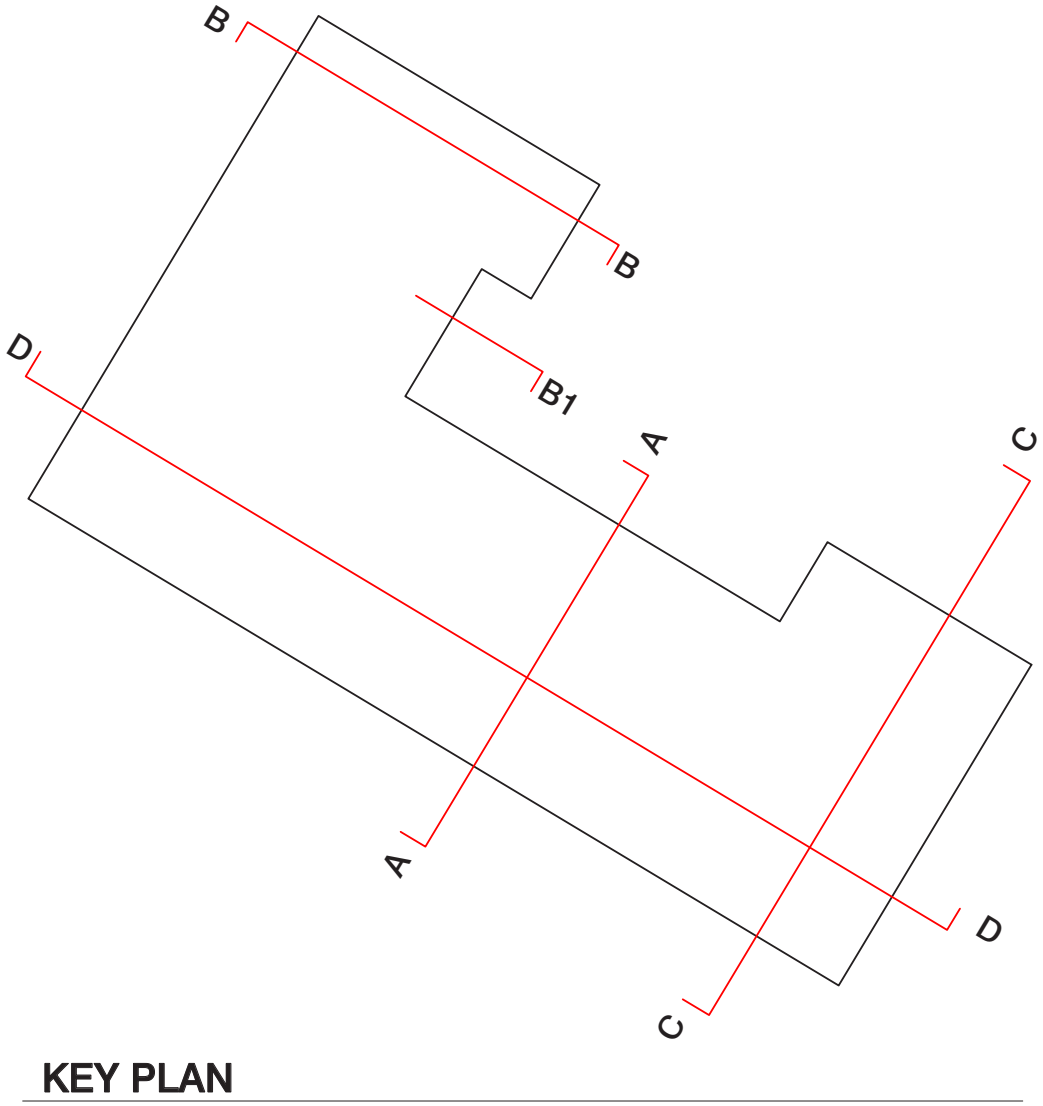
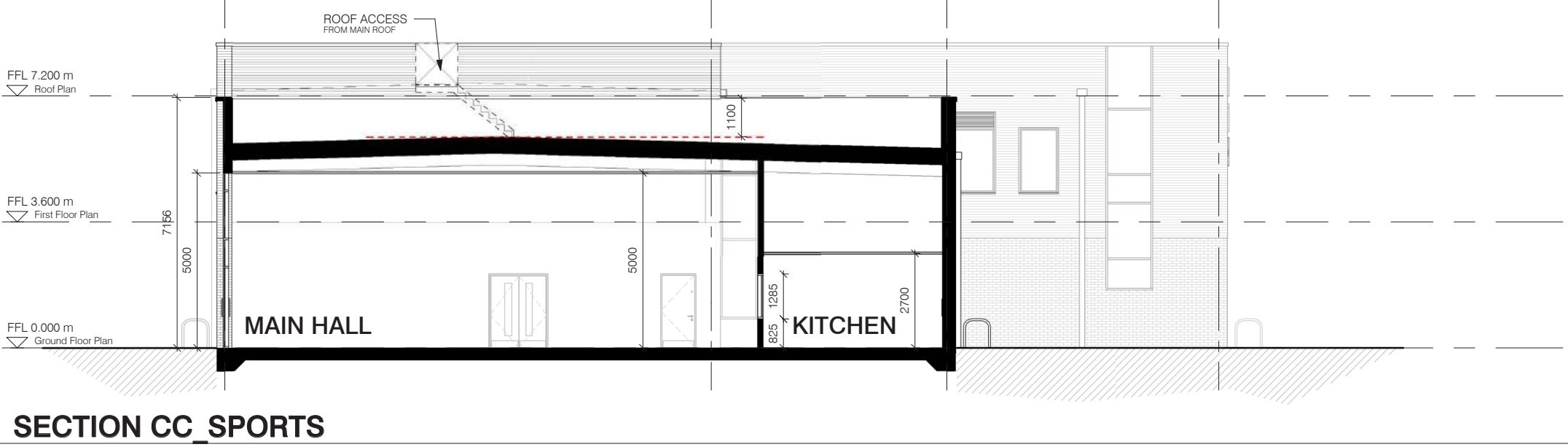
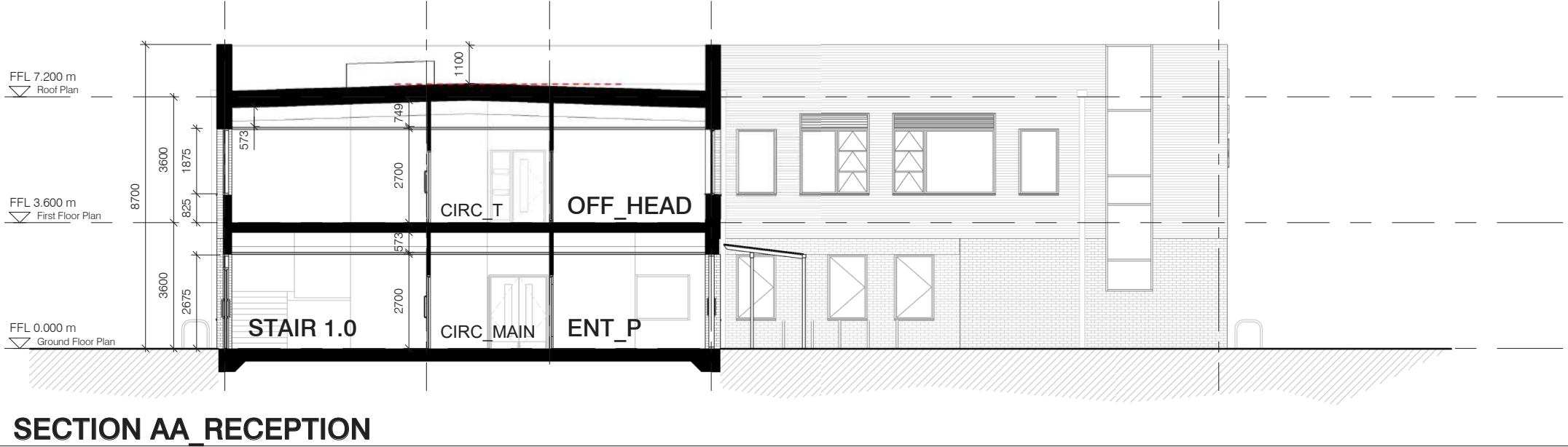
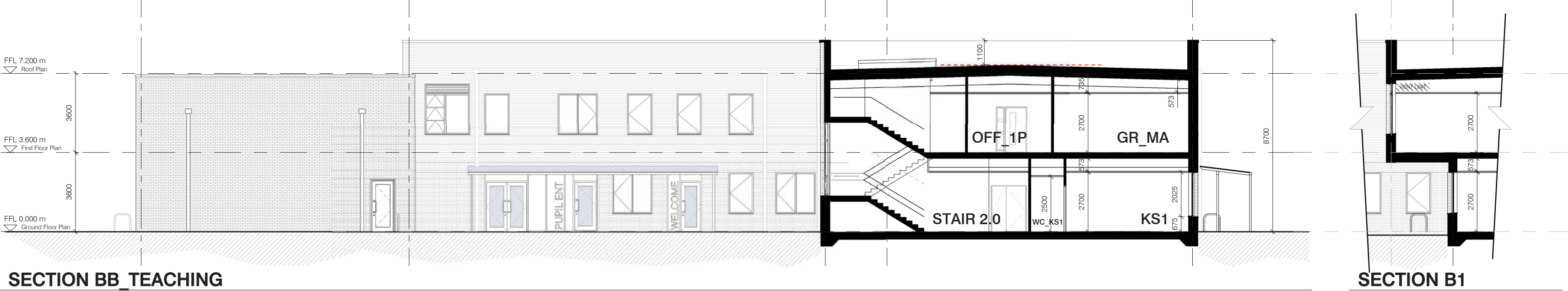


GROUND FLOOR PLAN





SECTIONS



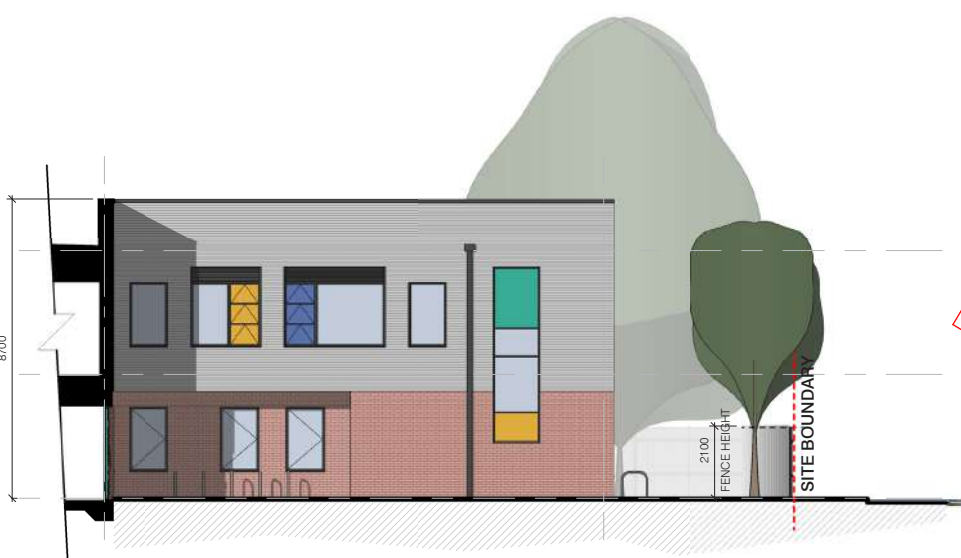
ELEVATIONS



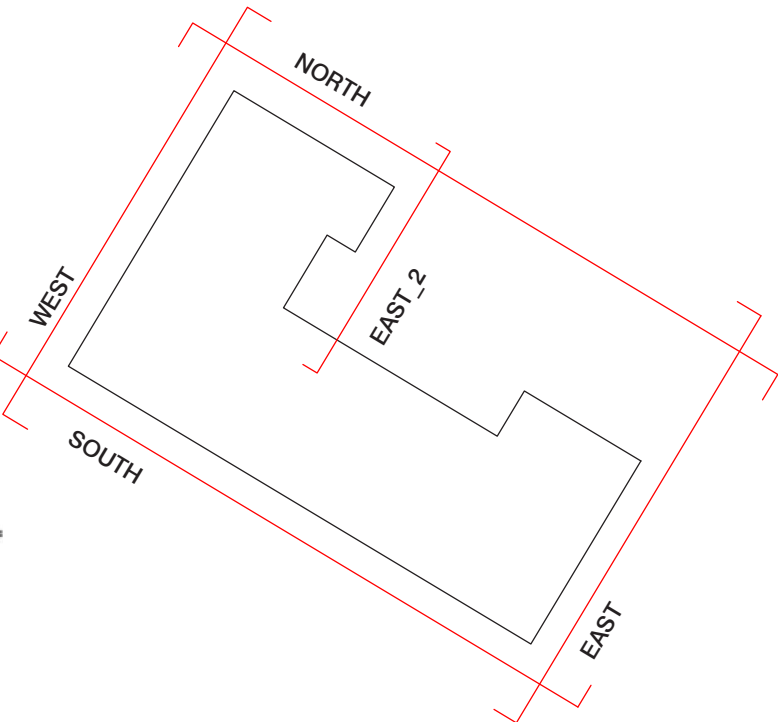
NORTH_WALNUT TREE WAY_ELEVATION
MAIN ENTRANCE & ARRIVAL



EAST_SPORTS/MAIN HALL_ELEVATION



EAST_TEACHING WING_ELEVATION



KEY PLAN

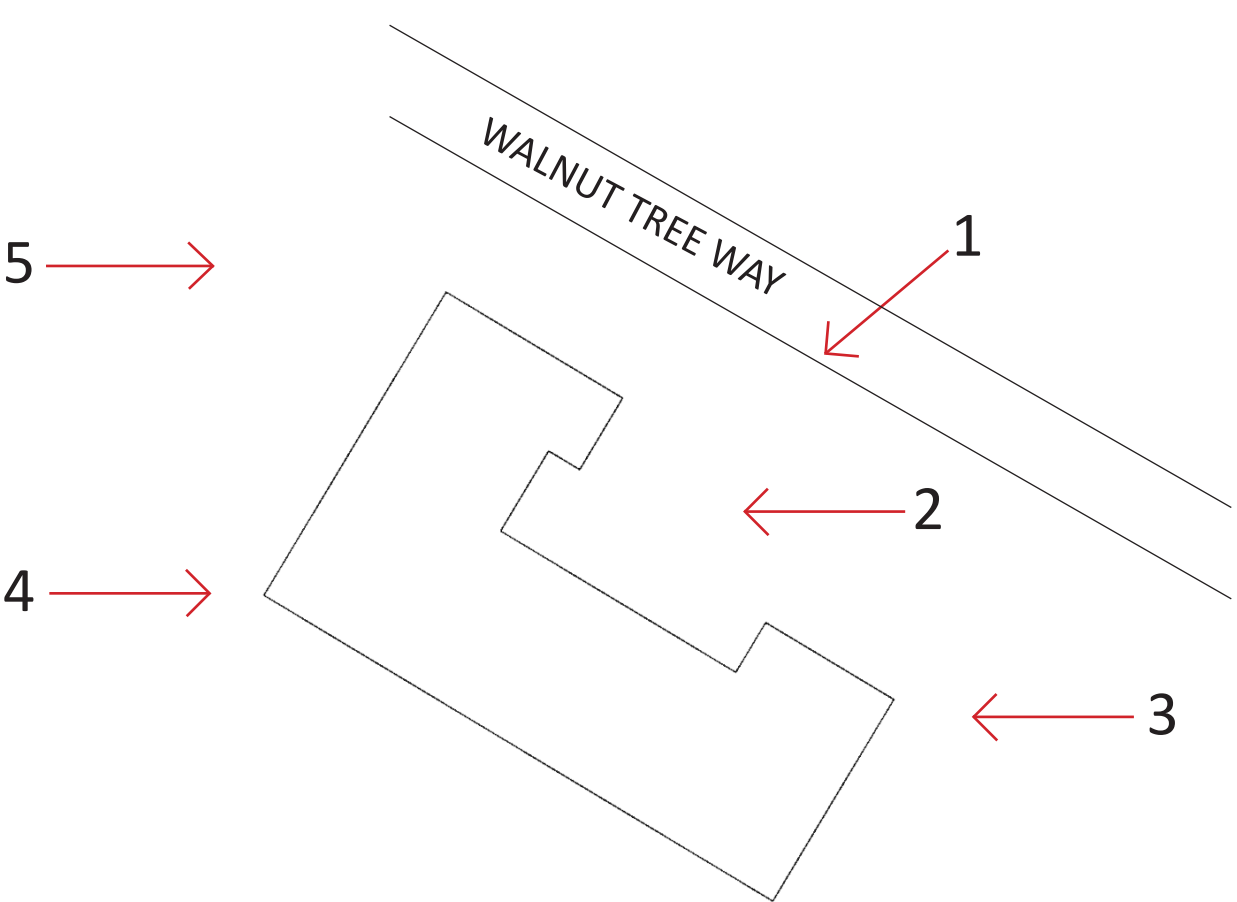


WEST_ELEVATION



SOUTH_ELEVATION

VIEWS



1



2



3



4



5

HIGH LEVEL VIEWS



1



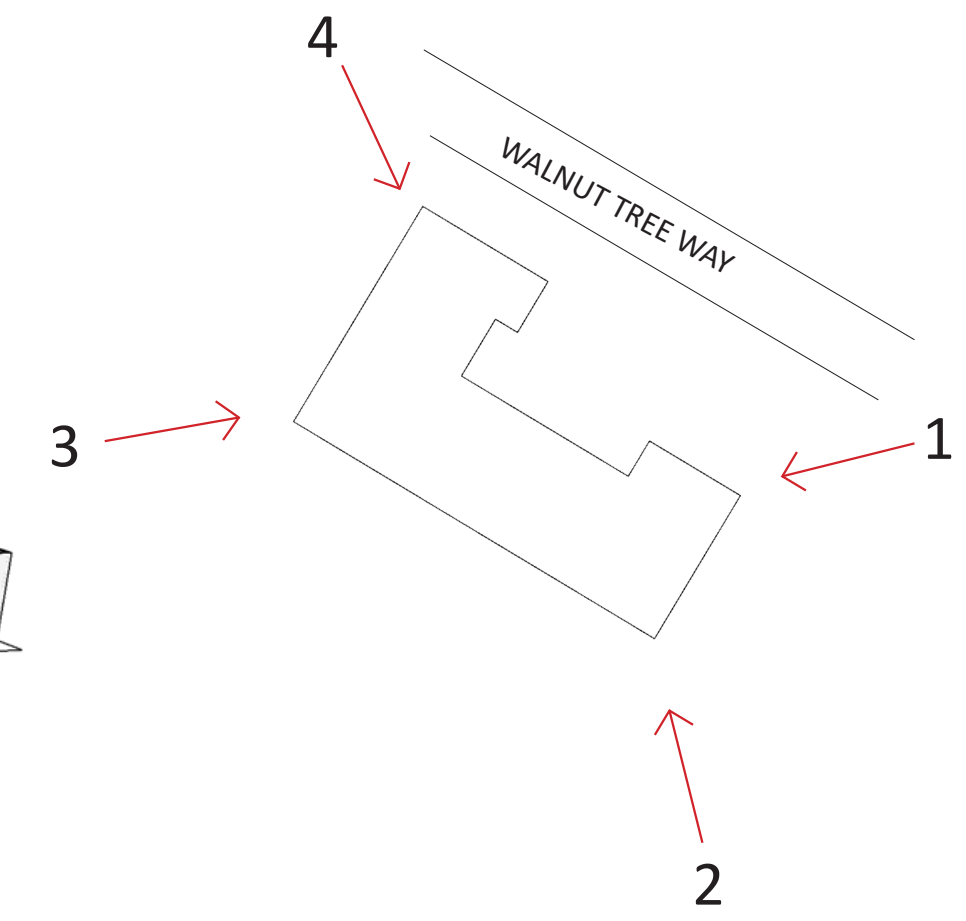
2



3

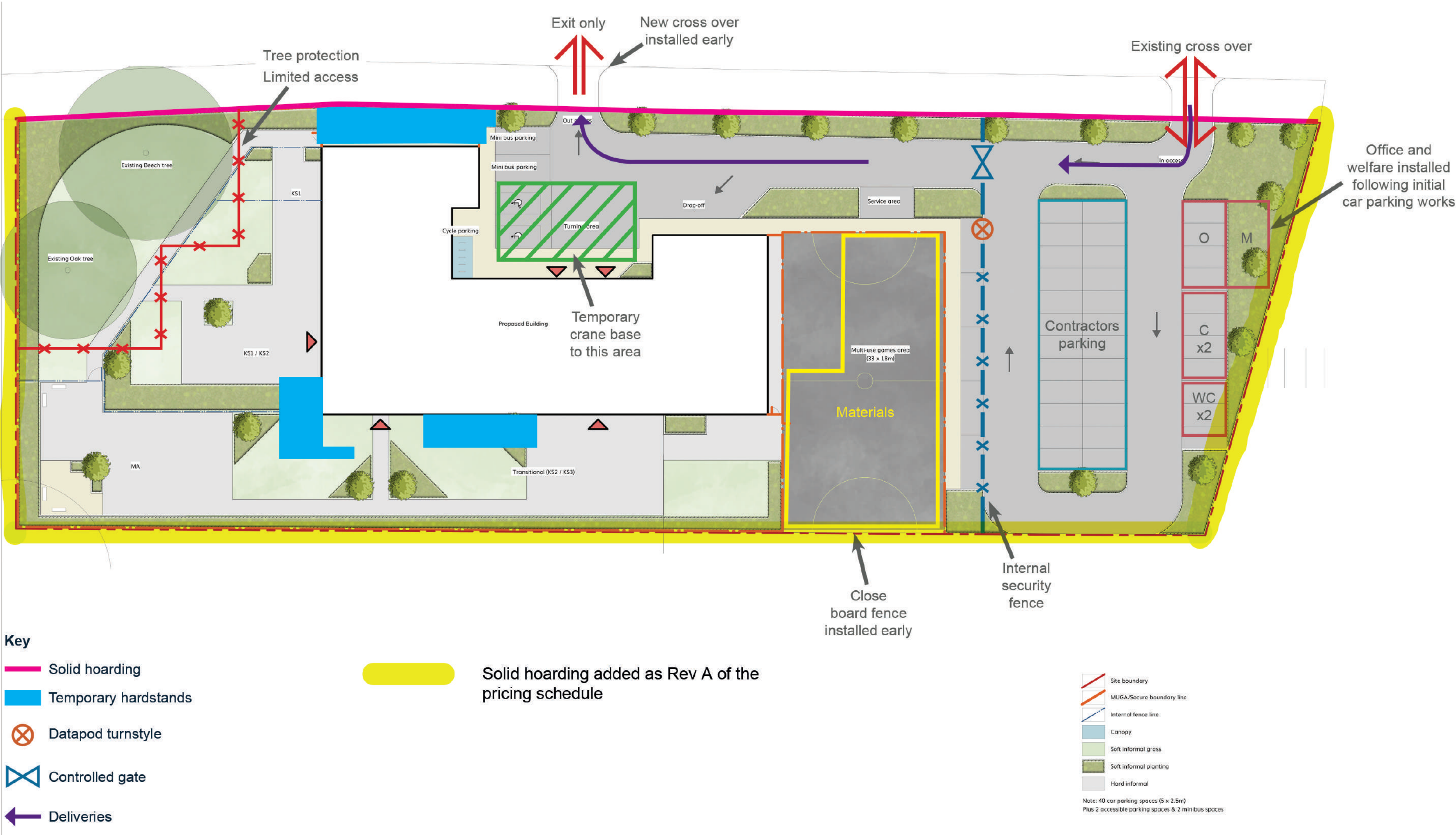


4



LOGISTICS PLAN

Phase 2: Delivery



MATERIALITY

Light brown / grey Cool /Calm tones



Natural / Soft / Domestic



Exploring key local colours / textures

