

Essex County Council & Sweyne Park School

What

The Public Consultation is taking place to share proposed plans for an expansion project at Sweyne Park School with the local community. This is your chance to review and comment upon the proposals before a planning application is submitted.

Why

The project scope requires years 7-11 to increase from 8 forms of entry to 9 forms of entry, a growth of 150 extra permanent places. The project aims to deliver essential additional teaching space for the school to meet the need for the local community. The proposals are for a new teaching block at the centre of the site.

The new accommodation to be provided is:

New Build

- 6no. General Classrooms with provision for hearing impaired pupils
- Staff Office & Work Room
- 1 x Store
- WC's, Plant and Circulation

The external work comprises of:

- Pathways between the buildings
- A covered linkway
- Some simple landscaping

The Project will be designed to deliver a low carbon energy footprint in construction and use. This will include energy saving measures such as 'LED lighting', 'Air Source Heat pumps' and 'Photo Voltaic panels'.

Where

The Proposed new development is situated at the centre of the site adjacent the existing all weather pitch with a proposed covered link to the existing school building.

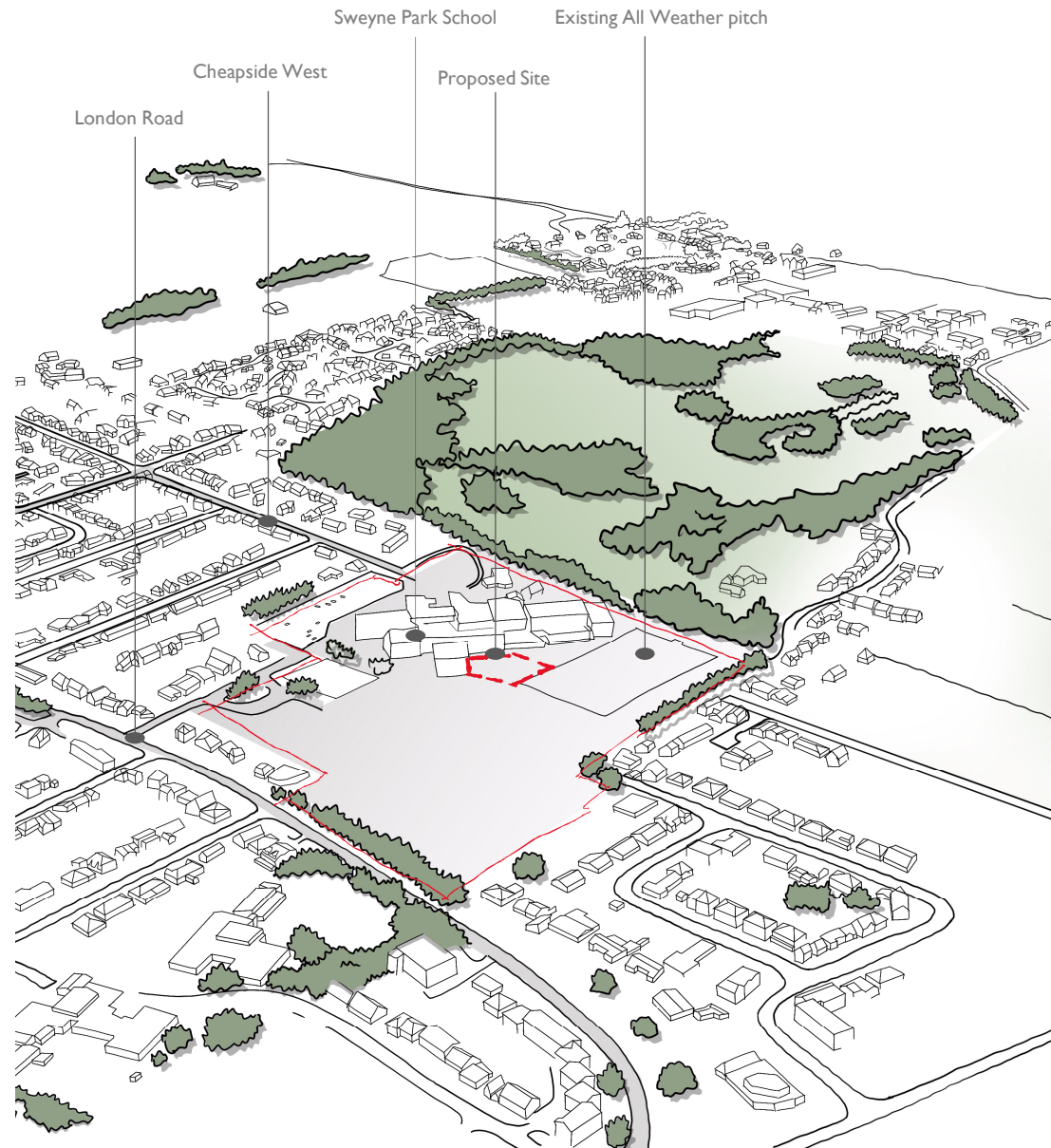
When

The building will be finished and ready for occupation for the start of the new school year, September 2021.

Who

The Project Partners are:

- Essex County Council
- Sweyne Park School

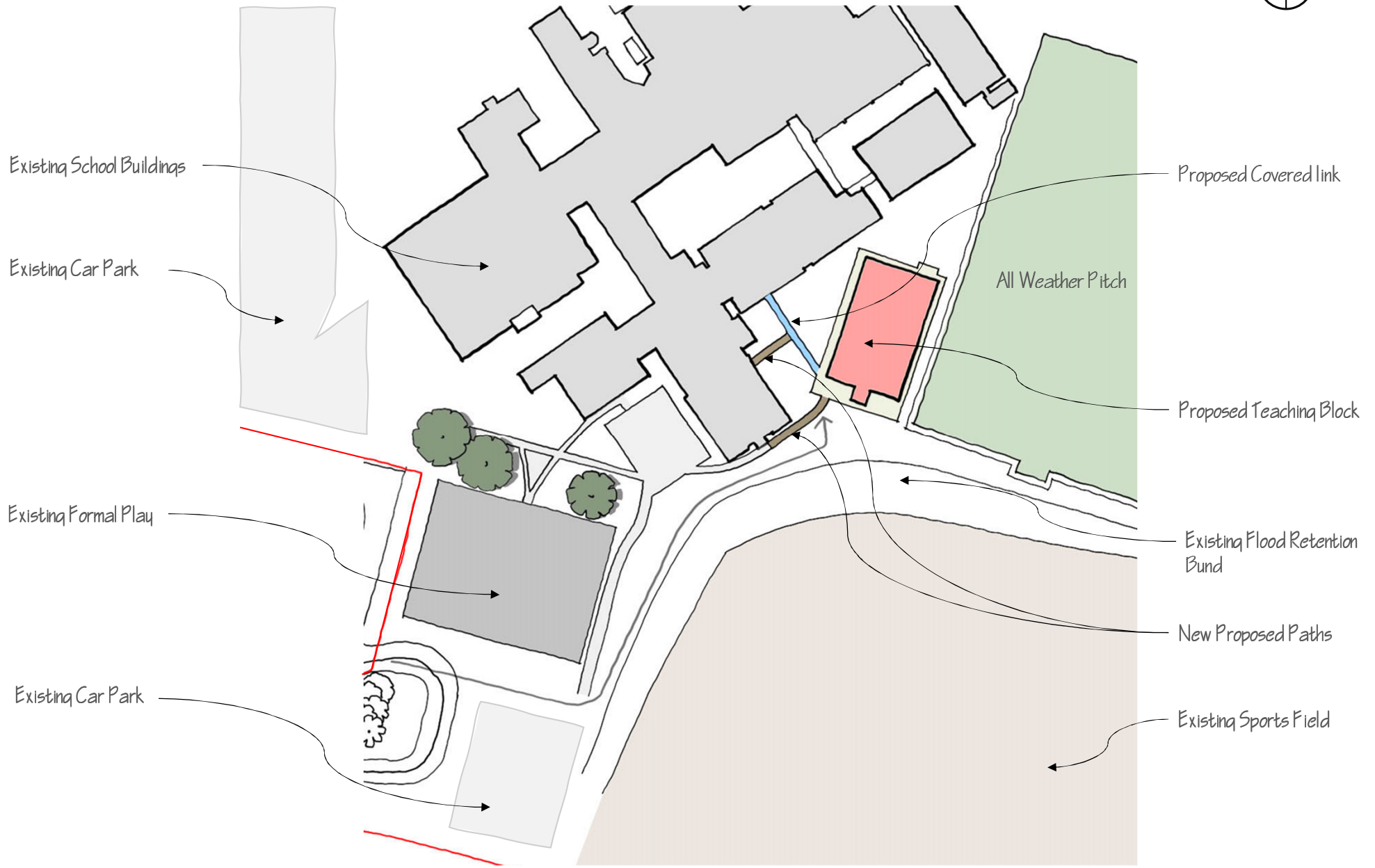


Have Your Say

To comment on these proposals go to
<https://consultations.essex.gov.uk/infrastructure-delivery/consultation-for-sweyne-park-school>

Have Your Say

To comment on these proposals go to <https://consultations.essex.gov.uk/infrastructure-delivery/consultation-for-sweyne-park-school>



PROPOSED SITE PLAN

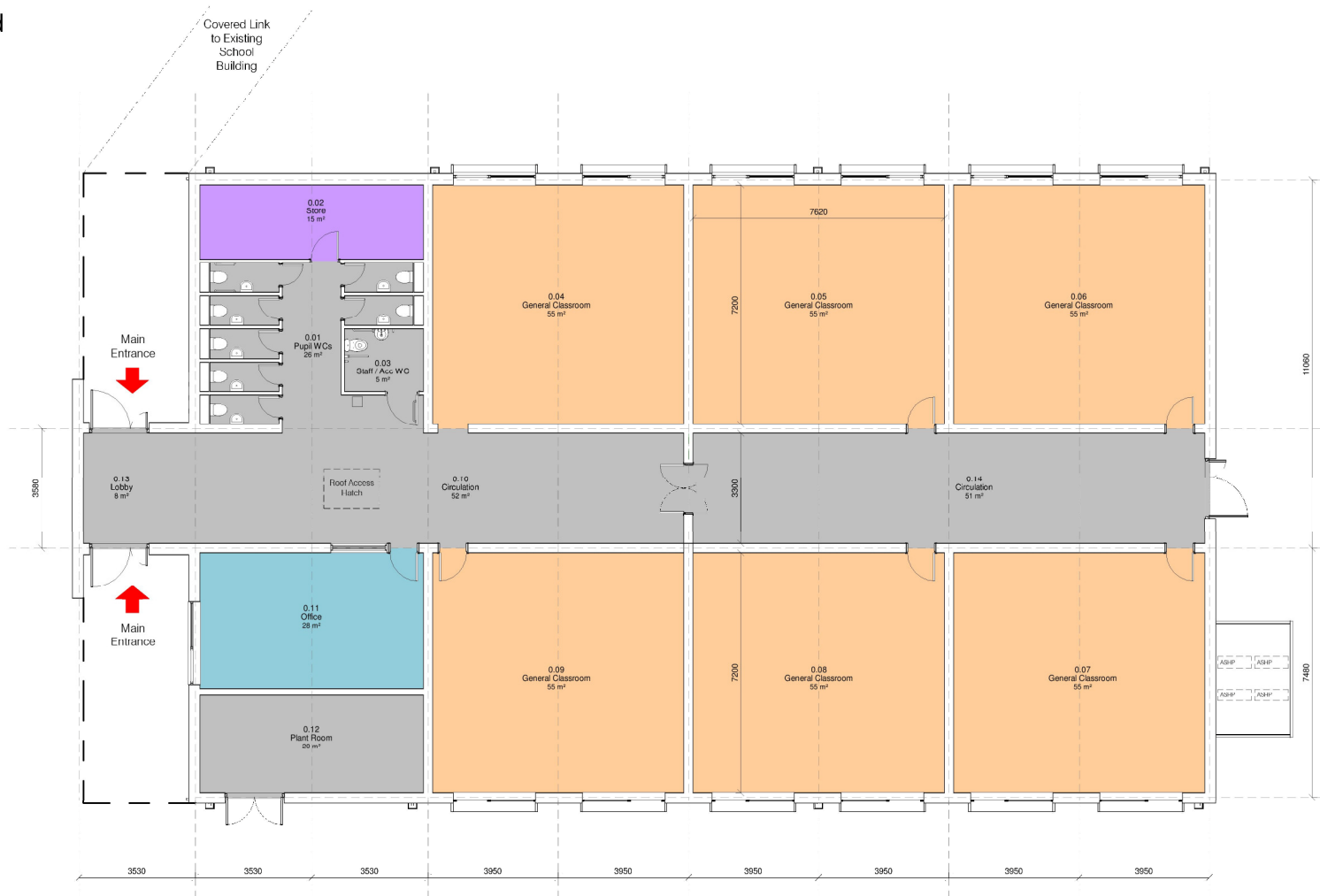
Have Your Say

To comment on these proposals go to <https://consultations.essex.gov.uk/infrastructure-delivery/consultation-for-sweyne-park-school>



By Department Legend

- Administration/Staff
- Basic Teaching Area
- Non-net areas
- Storage



Have Your Say

To comment on these proposals go to <https://consultations.essex.gov.uk/infrastructure-delivery/consultation-for-sweyne-park-school>

Materials and Elevational Development

A simple palette of materials is proposed for the new build to reference the existing materiality and create a cohesive school environment.

White and grey cladding defines the teaching and ancillary spaces and a buff brick plinth is used to refer to the existing school building.

Colour is added to the material palette as blue cladding to highlight the brand colour of the school.



Proposed View from the Existing School



Proposed View from the Existing All Weather Pitch



Existing school building

Have Your Say

To comment on these proposals go to <https://consultations.essex.gov.uk/infrastructure-delivery/consultation-for-sweyne-park-school>



Modular Construction

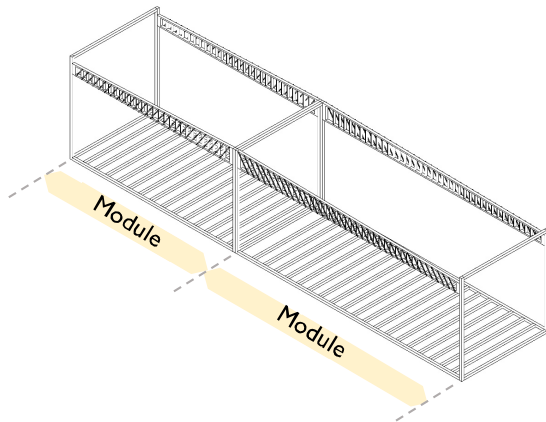
The project proposes the use of modular construction, where a building is constructed off-site, under controlled factory conditions, using the same materials and designed to the same codes and standards as conventional buildings – but in about half the time.

Buildings are produced in “modules” that when put together on site, reflect the identical design intent and specifications of highly sophisticated site-built facilities – without compromise. They can be built and arranged in any shape or style similar to a traditionally built building.

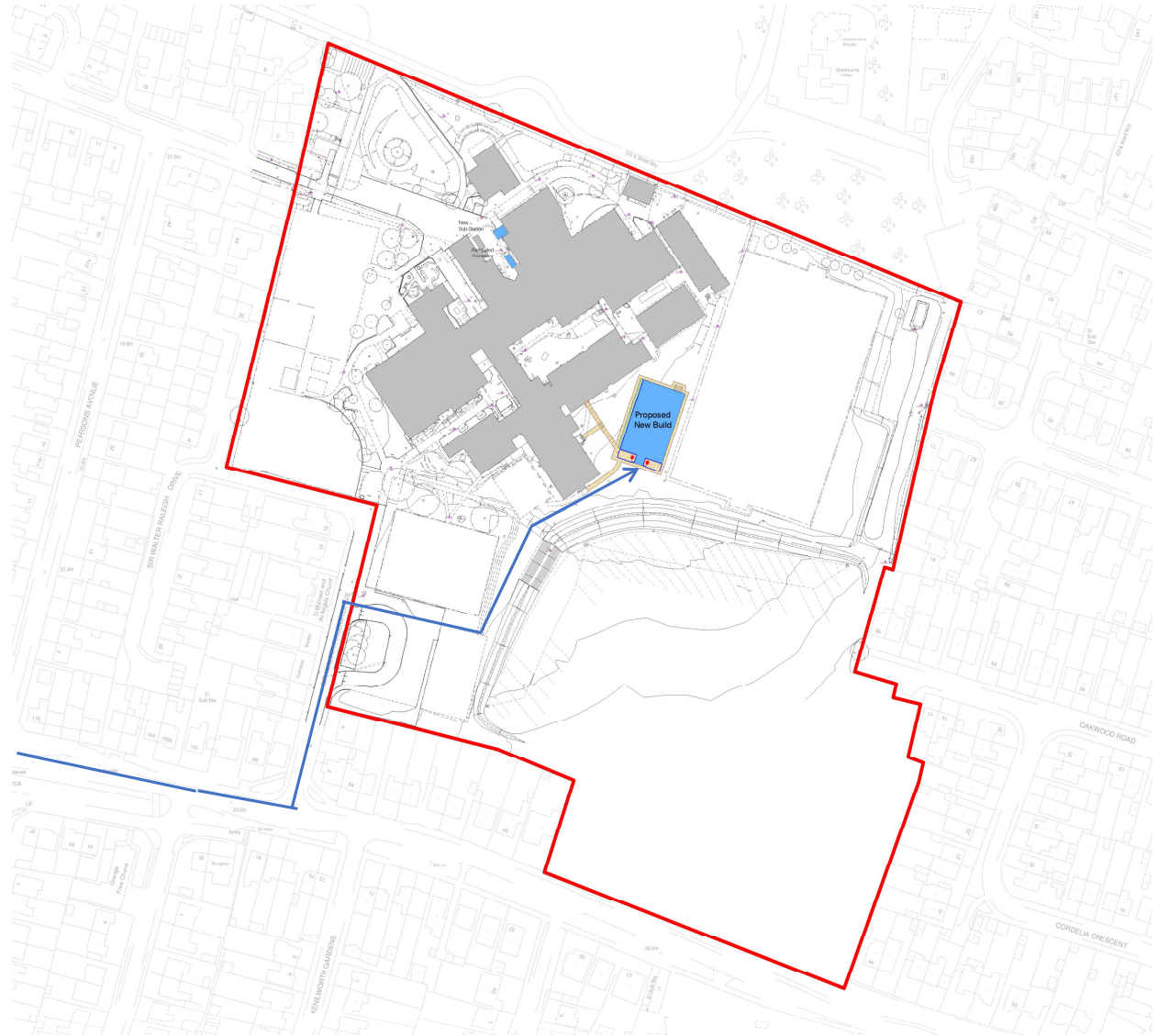
Benefits

Some of the benefits of modular construction are listed below:

- Reduced time on site
- Few deliveries and construction vehicles
- Minimised disruption to the school



Typical structure of the modules



Site Plan - Contractor Access