

Welcome to the public exhibition. Essex County Council and its team are pleased to present proposals for the new teaching block and extension at Stebbing Primary School.

This online exhibition is being held to inform the local residents about the emerging proposals and to give the opportunity to provide feedback. We value your inputs and feedback forms are available online for you to complete. We thank you for your interest.

Elite Systems is working to design and deliver the new school facilities. The proposals have been developed in close collaboration with the leadership team at the school.

This proposal construction of a new permanent standalone classroom located in the western side of the existing football field beside The Pod.



Bedford St. Westgate
Cleckheaton BD19 5EA
Tel: 01274 873232 Fax: 01274 877779
email: info@elitesystemsgb.co.uk
www.elitesystemsgb.co.uk
the possibilities are endless.....



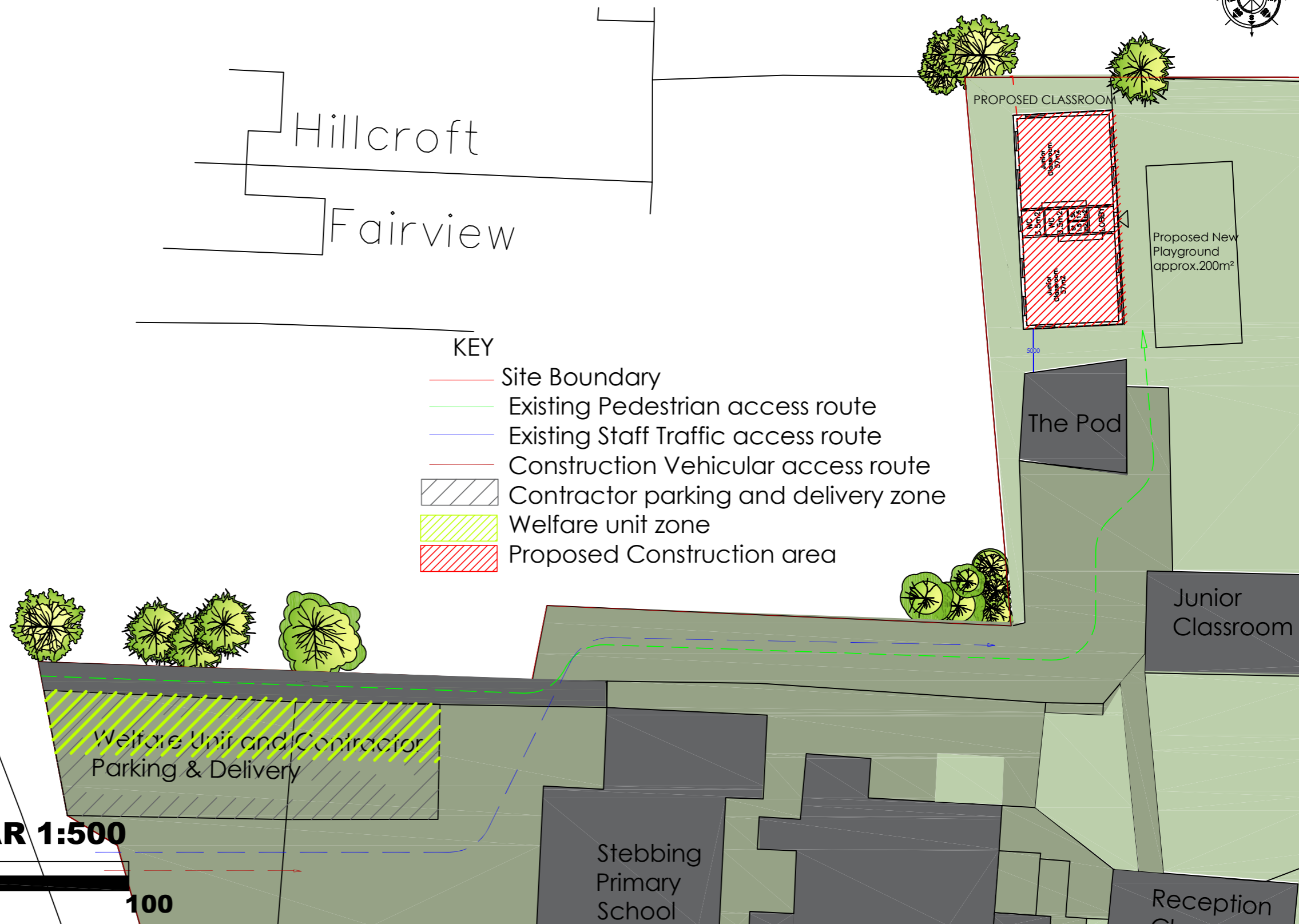
Essex County Council

Stebbing Primary School
Essex County Council
Public Consultation Display
Board 02
08 April 2020

STEBBING PRIMARY SCHOOL
 PROPOSED IMPROVEMENT WORKS
 CONSTRUCTION MANAGEMENT PLAN

The new block is to be accessed directly from the current pedestrian route on site. The building will accommodate two classrooms with associated storerooms, common lobby and WC areas.

The proposed building features a simple palette of materials for their durability. It will have grey fascia, Black Cembrate Hardie plank cement board cladding with red brickwork plinth surround to match the existing buildings on site and also suit the local area. It will also have steel external doors and the windows are to be in a white uPVC to match existing.

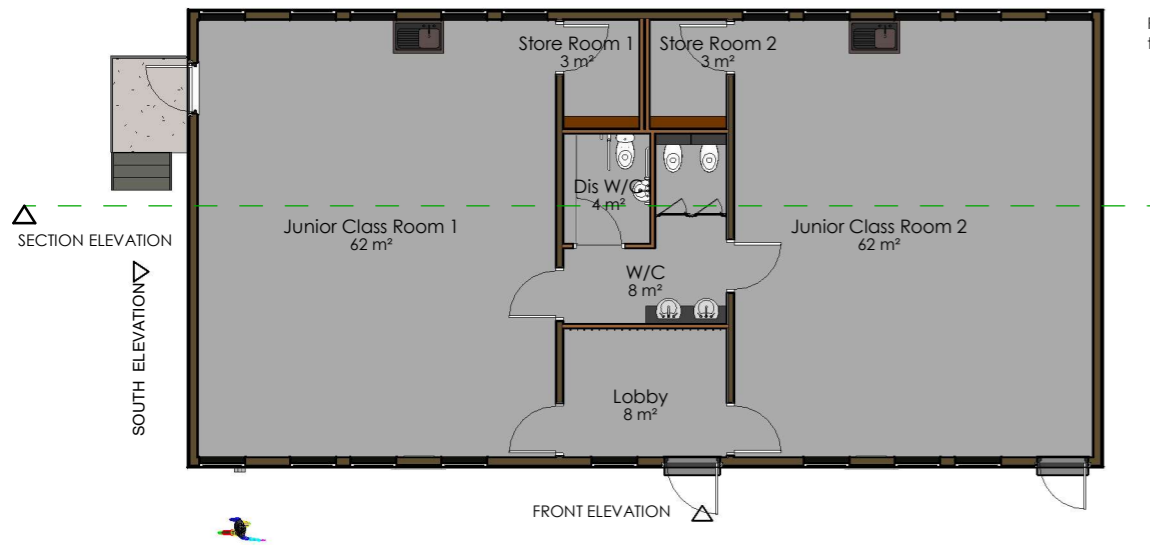


Bedford St. Westgate
 Cleckheaton BD19 5EA
 Tel: 01274 872232 Fax: 01274 877779
 email: info@elitesystemsgb.co.uk
 www.elitesystemsgb.co.uk
 the possibilities are endless.....

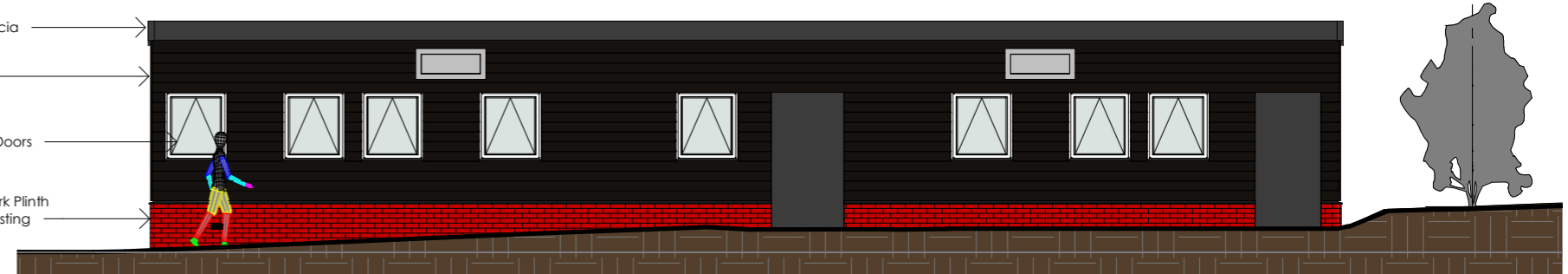


Stebbing Primary School
 Essex County Council
 Public Consultation Display
 Board 02
 08 April 2020

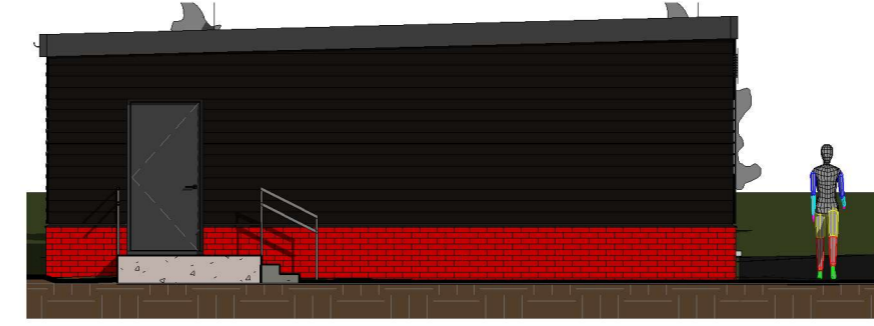
STEBBING PRIMARY SCHOOL
PROPOSED IMPROVEMENT WORK
NEW STANDALONE CLASSROOM



4 Proposed New Classroom Plan
1 : 150



1 Front Elevation
1 : 100



2 South Elevation
1 : 100



3 Section Elevation
1 : 100

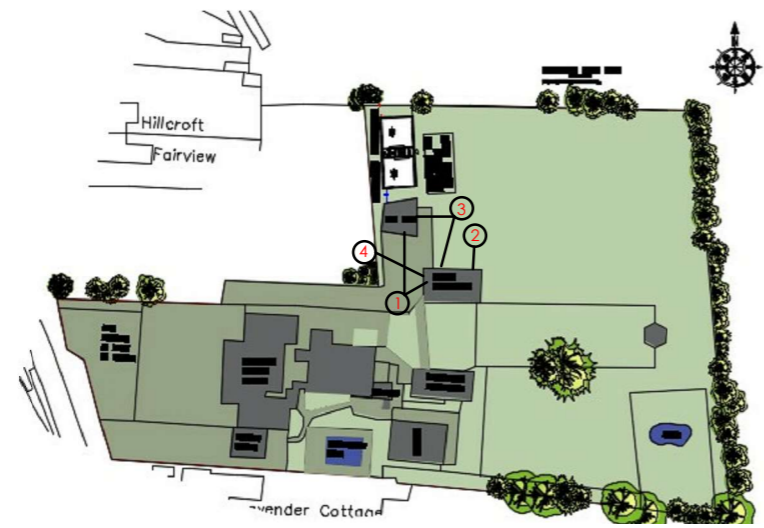


1.



2.

Proposed New Classroom to match existing structure on site



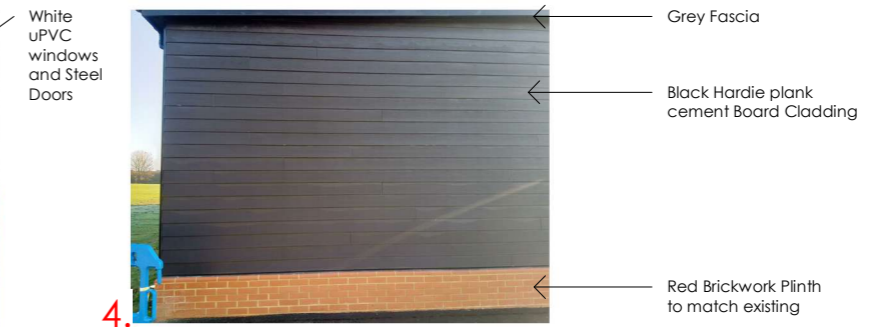
KEY LOCATIONS OF EXISTING STRUCTURES



3.



4.



STEBBING PRIMARY SCHOOL
PROPOSED IMPROVEMENT WORK
NEW STANDALONE CLASSROOM



MATERIAL PALLETTE

RED BRICK WORK PLINTH
Cembrite Black Hardie Plank Cladding
Grey Fascia White uPVC Windows
RAL 7016 Steel External Doors



Black Cembrite Hardie Plank Cladding



Red Brickwork for Brick Plinth



Bedford St. Westgate
Cleckheaton BD19 5EA
Tel, 01274 872232 Fax, 01274 877779
email, info@elitesystemsgb.co.uk
www.elitesystemsgb.co.uk
the possibilities are endless.....



Essex County Council

Stebbing Primary School
Essex County Council
Public Consultation Display
Board 02
08 April 2020