

Dry Street

Primary School & Early Years Childcare Setting



Proposed Site Location Plan:NTS



Proposed Site Plan 1:NTS

Brief

The project is to deliver a new 2 Form Entry (420 place) Primary school, including additional Special Educational Needs (SEND) provision and 56 Place Early Years childcare facility. The project is located on the Redrow Westley Heights Housing Development in Basildon, Essex, on the education land identified within the S106 agreement.

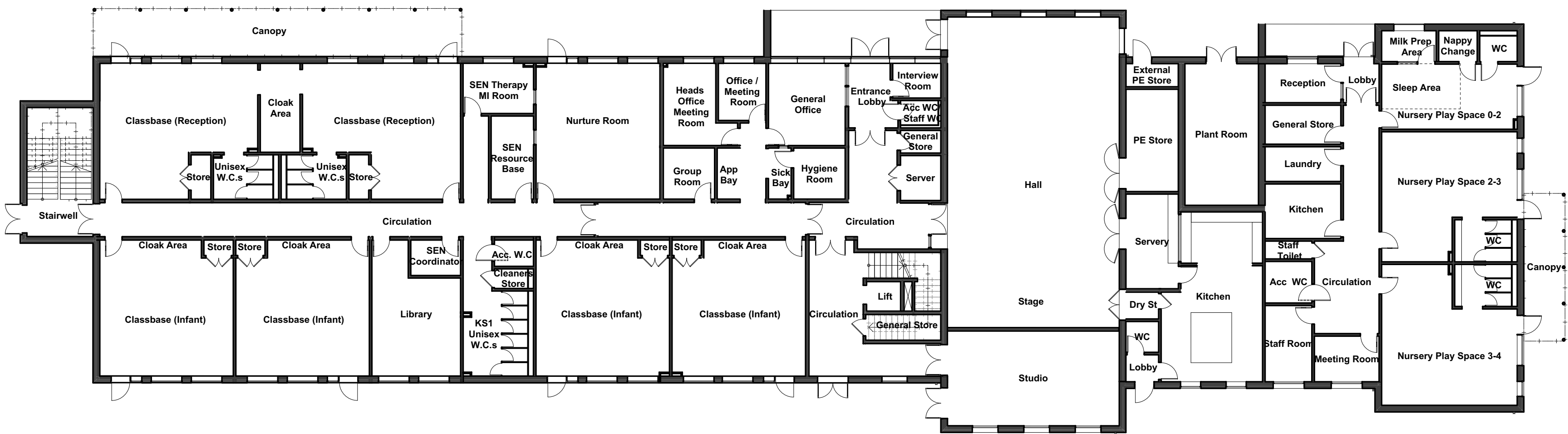
The new building is to be ready for occupation by July 2024

External Play & Learning Spaces

To provide a design that allows users to engage and interact with the external environment, creating a practical, hands-on learning experience with direct connections to the outdoors from the teaching facilities.

Dry Street

Primary School & Early Years Childcare Setting



Ground Floor Plan 1:200

Internal Adjacencies

The Primary school and the Early Years and Childcare facility will be accommodated within the same building, with the potential for independent operation, if required. The location of the Hall creates the potential for out of hours or community use.

Infant Classrooms are located on the ground floor with Junior classrooms on first floor. The classrooms are arranged in pairs to allow for opportunities of interaction. The first floor also houses a food/science/DT room which will mainly be utilised by junior aged pupils. In addition to basic primary accommodation. An additional SEND (Nurture Room) is to be provided, to enable a group of up to eight pupils with special educational needs, on the school's roll, to receive additional assistance and support, where required.



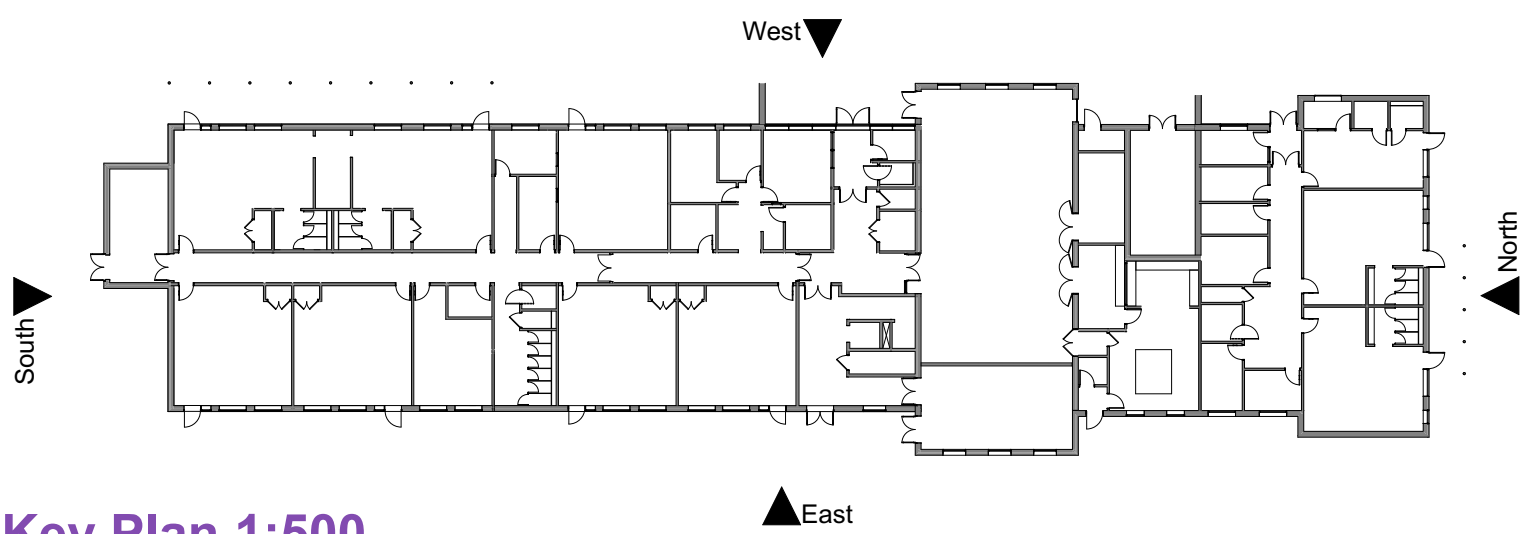
Site Plan



Precedent Images

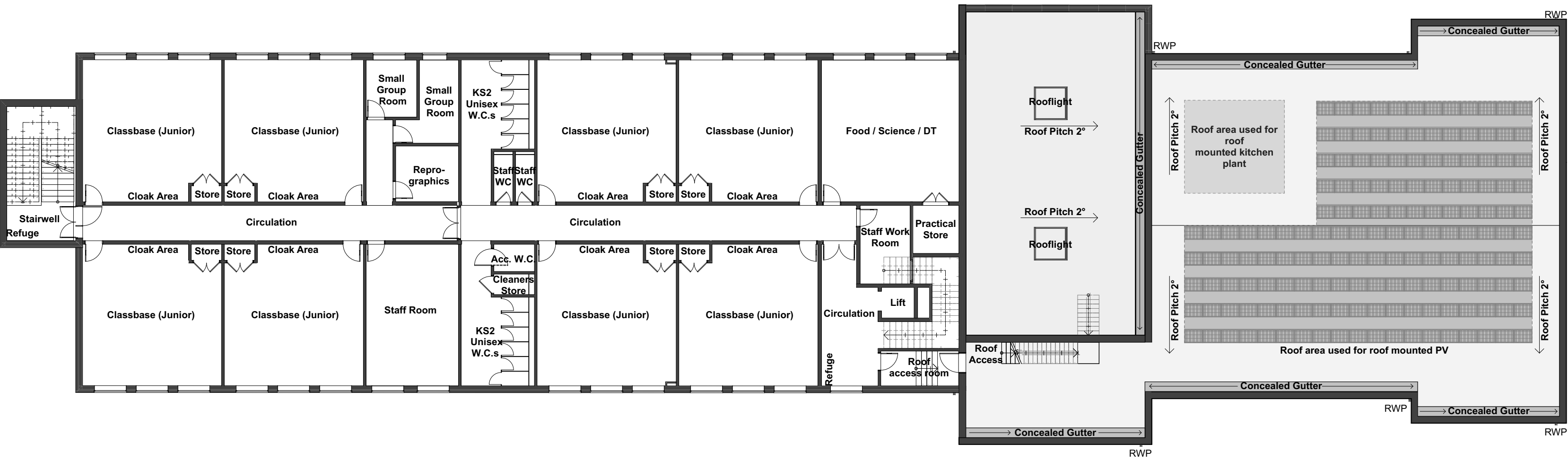


West Elevation 1:200



Key Plan 1:500

Dry Street Primary School & Early Years Childcare Setting



First Floor Plan 1:200



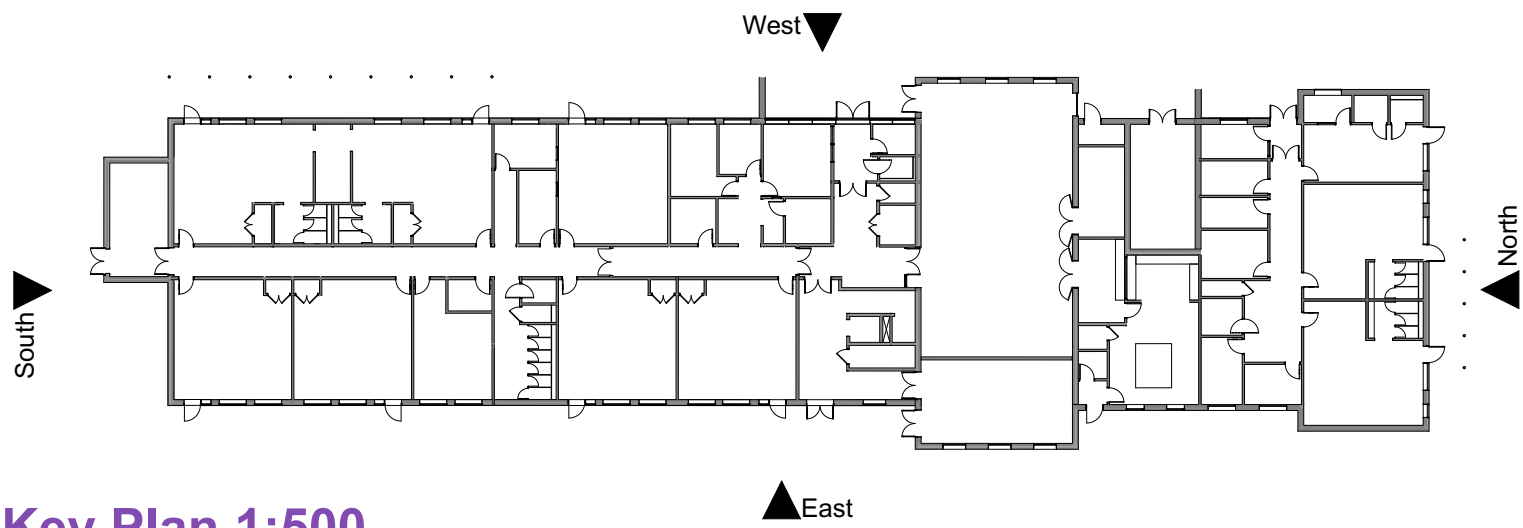
Artist Impression



North Elevation 1:200



South Elevation 1:200

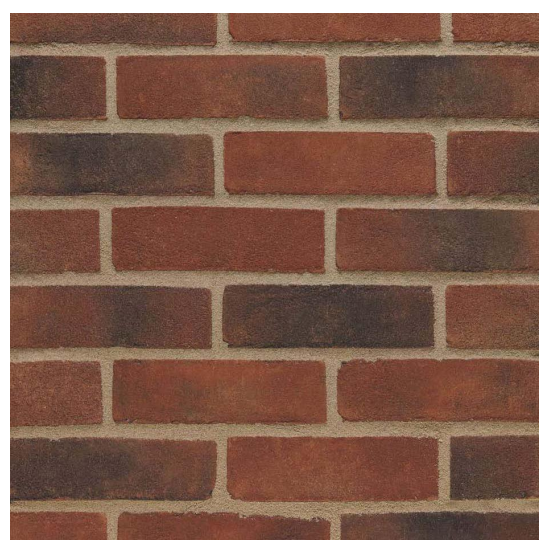


Key Plan 1:500

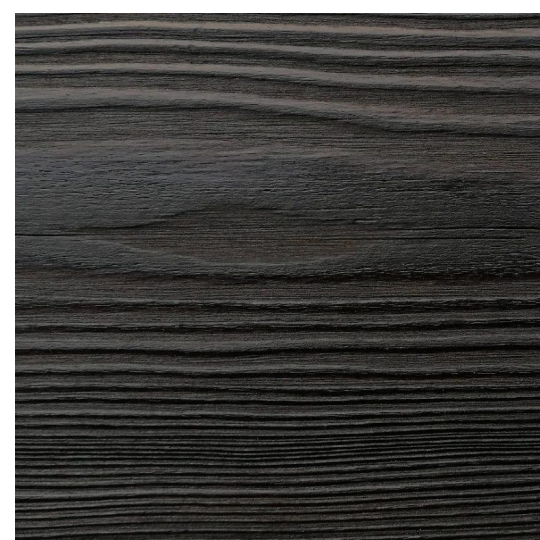
Dry Street Primary School & Early Years Childcare Setting



Artist Impression - Main Entrance



1. Red multi stock facing brickwork



2. Black Timber Cladding



3. Aluminium Windows/Doors/Rainwater goods/Canopy



4. Off white Render

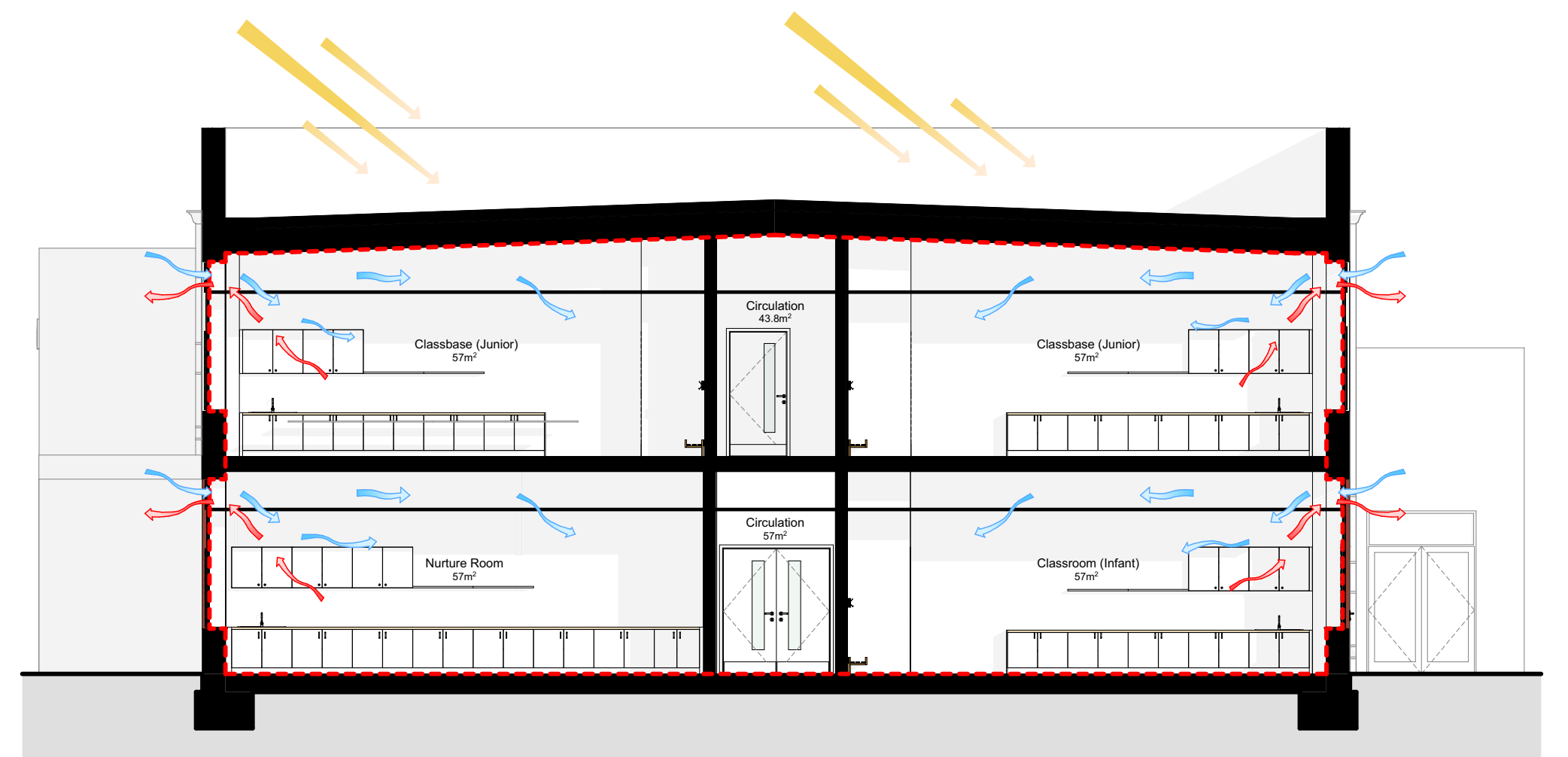


5. Green Render



6. Grey Render

Indicative Materials Palette



Indicative Section

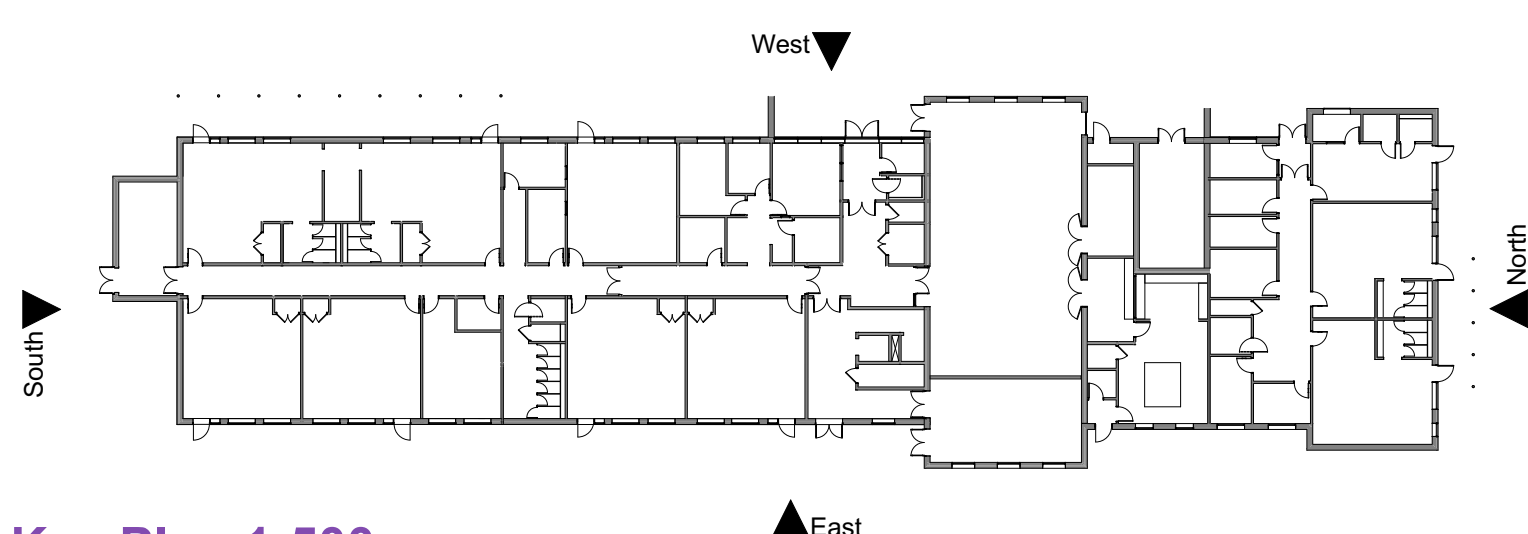
External Façade

Materials for the treatment of the external façade have been selected to reflect those apparent in the surrounding residential development.

Brickwork is proposed to the ground floor for robustness in a school environment. Render is proposed to first floor elements to soften the visual impact of the school and to reflect the character of the surrounding development. A coloured render is proposed to the nursery element to create a visual distinction to this element of the building. Black timber cladding is proposed to create vertical breaks to the proposed elevations and provide distinction between key spaces, such as the hall and nursery.



East Elevation 1:200



Key Plan 1:500