

# LIMEBROOK WAY

## PRIMARY SCHOOL & EARLY YEARS CHILDCARE SETTING

DRAFT FOR PUBLIC CONSULTATION STAGE

### The Brief



The project is located on the Taylor Wimpey Handley Gardens Housing Development in **South Maldon, Essex**, on the education land identified within the S106 agreement.

The key deliverables are:

- **New primary school**

To deliver a new 2FE (420 place) Primary School, with additional special educational needs (SEND) provision for June 2024.

- **New early years and childcare facility**

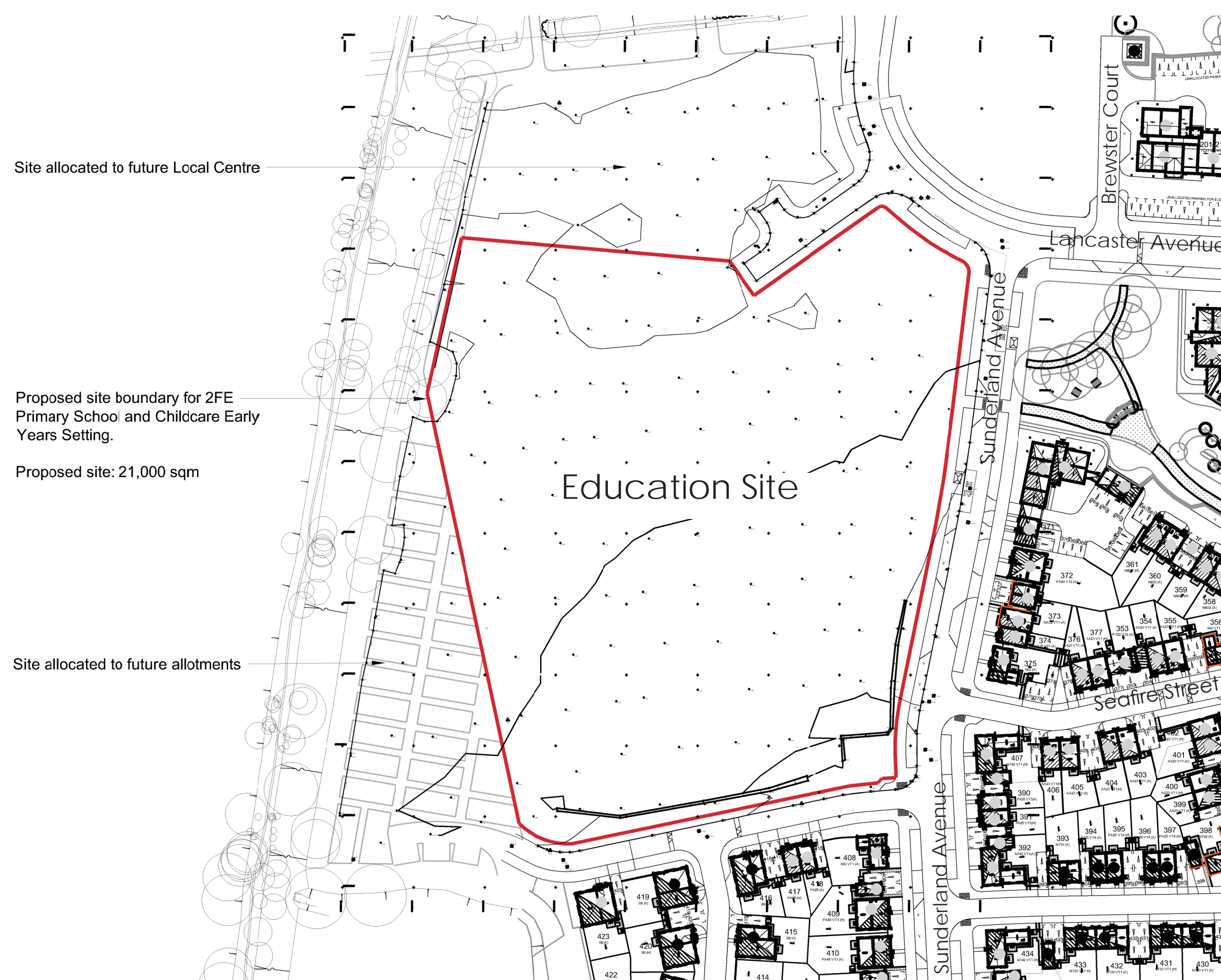
To provide a new 56 place early year's facility for June 2024.

- **Provide a building that is net-zero in operation**

- **External play/ learning space**

To maximise the school site, the proposal will create outdoor spaces to create a coherent yet varied outdoor environment for children to learn and play.

### Site Location Context



### Existing Site Location Plan



### Proposed Masterplan



### Proposed Plans



Proposed First Floor



Proposed Ground Floor

### Key of Spaces

- Teaching Rooms
- Staff & Admin
- WCs
- Group Rooms
- Main Hall
- Learning Resource
- Kitchen
- Stores & Plant
- Circulation



Example Interiors



# LIMEBROOK WAY

## PRIMARY SCHOOL & EARLY YEARS CHILDCARE SETTING

DRAFT FOR PUBLIC CONSULTATION STAGE

### Proposed Elevations



North Elevation



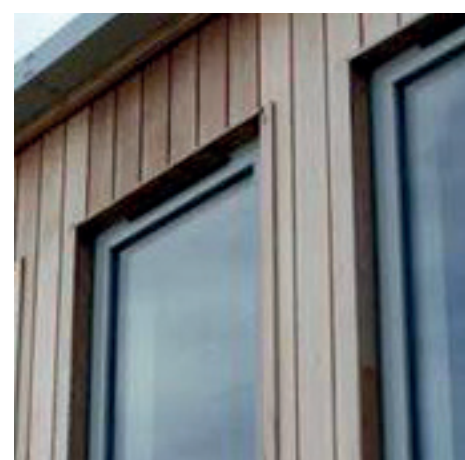
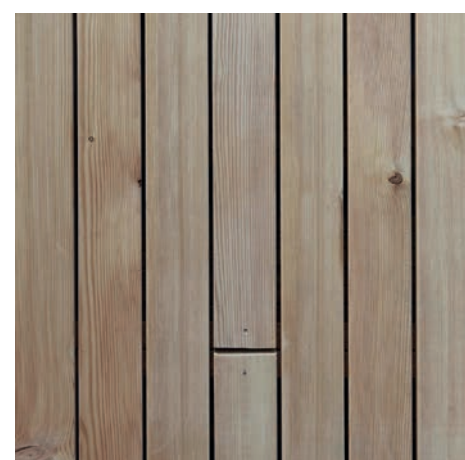
East Elevation



West Elevation



South Elevation



### Indicative Material Palette

- Buff facing brickwork
- Vertical timber cladding
- Light grey render
- Powder coated aluminium windows and doors in dark grey

### Artist Impression - Visualisations of the Development



Proposed East Facing View



Proposed North Facing View



Proposed West Facing View



Proposed North Facing View