

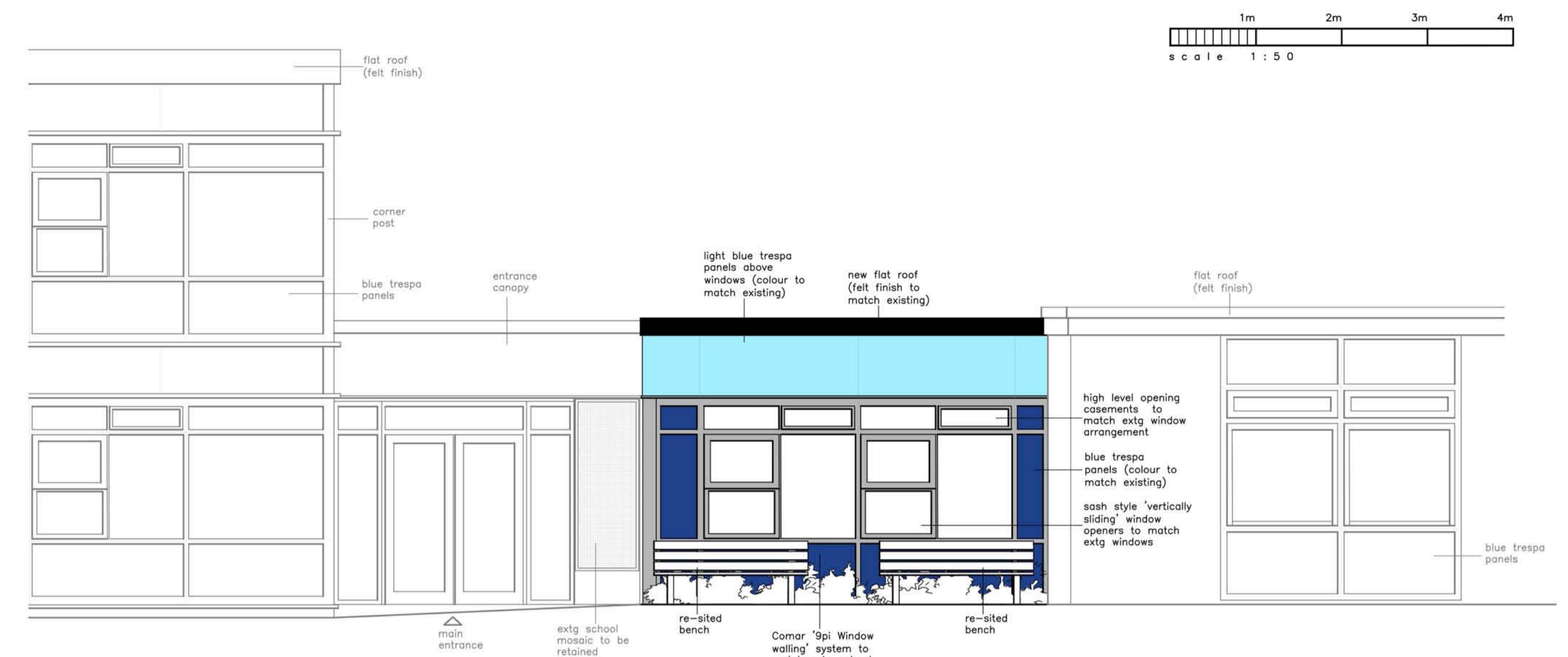
Proposed Extension Works

Some children require special educational provision, either because they have a disability or suffer from social; emotional or learning difficulties which prevents or hinders them from making use of the educational facilities generally provided. Schools are required to make provision for such needs and these proposals will allow the school to provide a designated space to continue with supporting children with additional requirements.

The proposal to provide a small extension to the front of the existing school will enable the School to meet current educational requirements in providing a Special Educational Needs (SEN) group room. The proposed SEN group room is a single storey extension located adjacent to the school main entrance, making use of an un-used external area.

This proposed extension also allows for first aid facilities to be resited in an unused courtyard to the rear of the school reception area, which in turn allows the School Hall to be increased in size (within the existing school envelope) to provide for temporary increase in pupil numbers.

The proposed external materials are to match the existing main school to ensure that this addition remains in keeping with the surrounding character, with blue cladding panels and glazed walling system to match.



west elevation / main entrance



east elevation



section b-b / west elevation