

Dunmow St Marys Primary School

Proposed Improvement Works

Welcome to this public exhibition. Essex County Council and its team are pleased to present proposals for the new extension and temporary teaching block at Dunmow St Marys Primary School on High Stile.

This online exhibition is being held to inform the local residents about the emerging proposals and to give the opportunity to provide feedback. We value your input and feedback forms are available online for you to complete. We thank you for your interest.

Form Architecture are working with Mitie Group PLC to design and deliver the new school facilities and the proposals have been developed in close collaboration with the team at the School and Essex County Council.

This proposal comprises two elements; the installation of a temporary standalone classroom unit and the construction of a new extension to the existing school building to a new SEN (Special Educational Needs) group room. Due to the temporary increase in pupil numbers the school hall will be increased via demolition of existing sick bay and stores. These will be re-provided through a further extension at the back of school in close proximity to its current location.



Key of Spaces

- 1. Proposed new SEN group room
- 2. Proposed First Aid Room
- 3. Proposed temporary relocatable classroom
- 4. Main school block
- 5. Main Hall (to be extended)
- 6. Car parking to front of the school

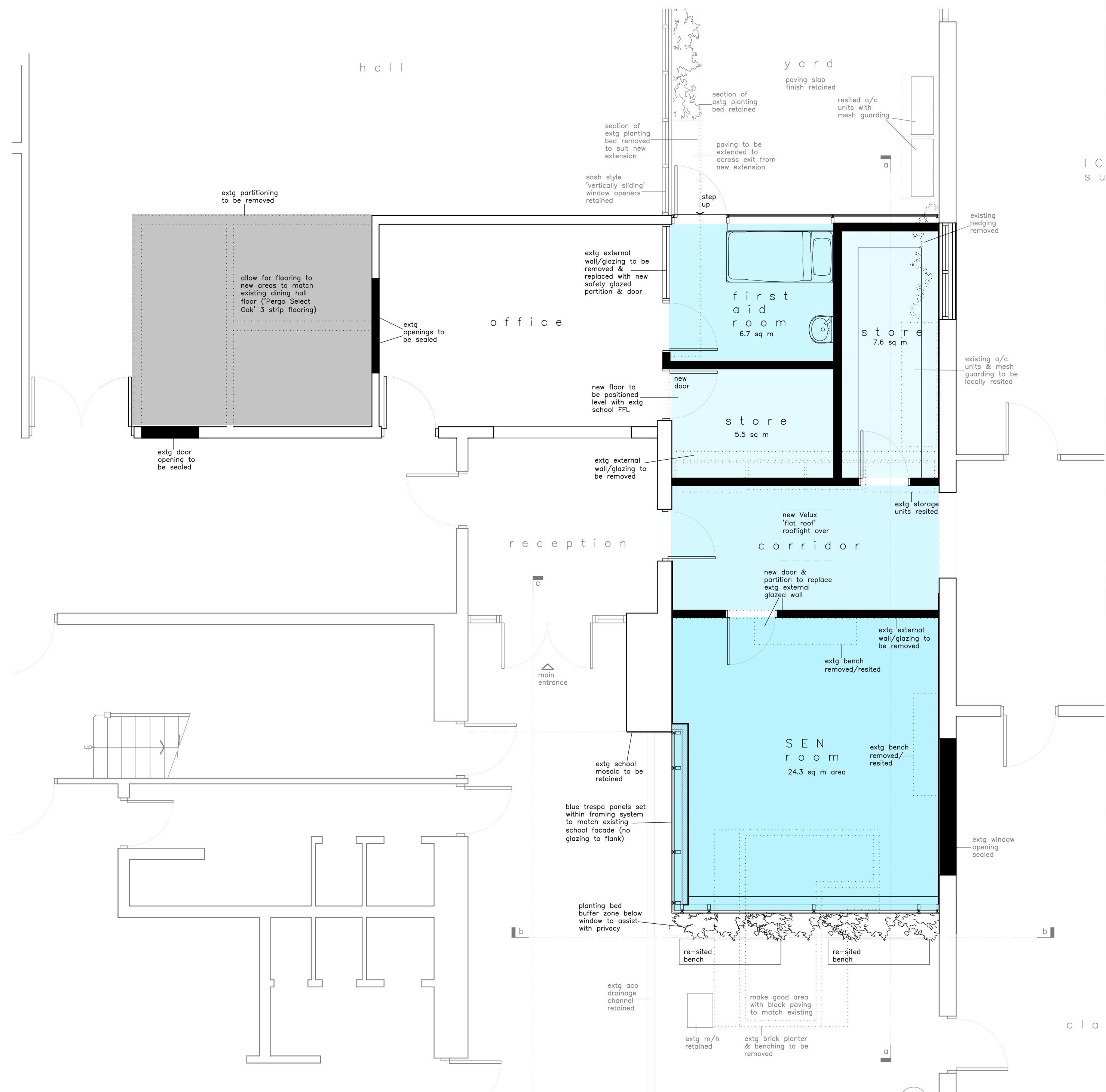


Proposed Temporary Relocatable Classrooms



demountable unit floor plan

Proposed Extension Works



school floor plan

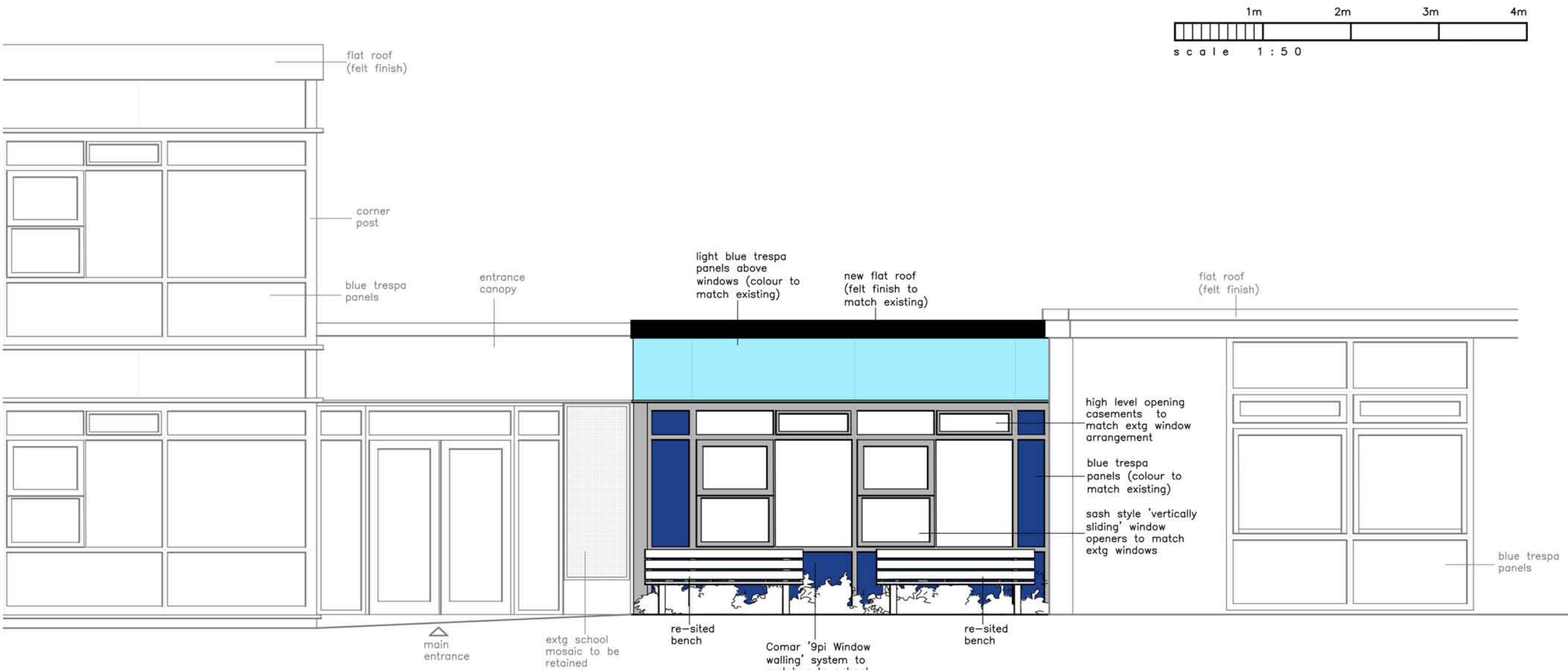
Proposed Extension Works

Some children require special educational provision, either because they have a disability or suffer from social; emotional or learning difficulties which prevents or hinders them from making use of the educational facilities generally provided. Schools are required to make provision for such needs and these proposals will allow the school to provide a designated space to continue with supporting children with additional requirements.

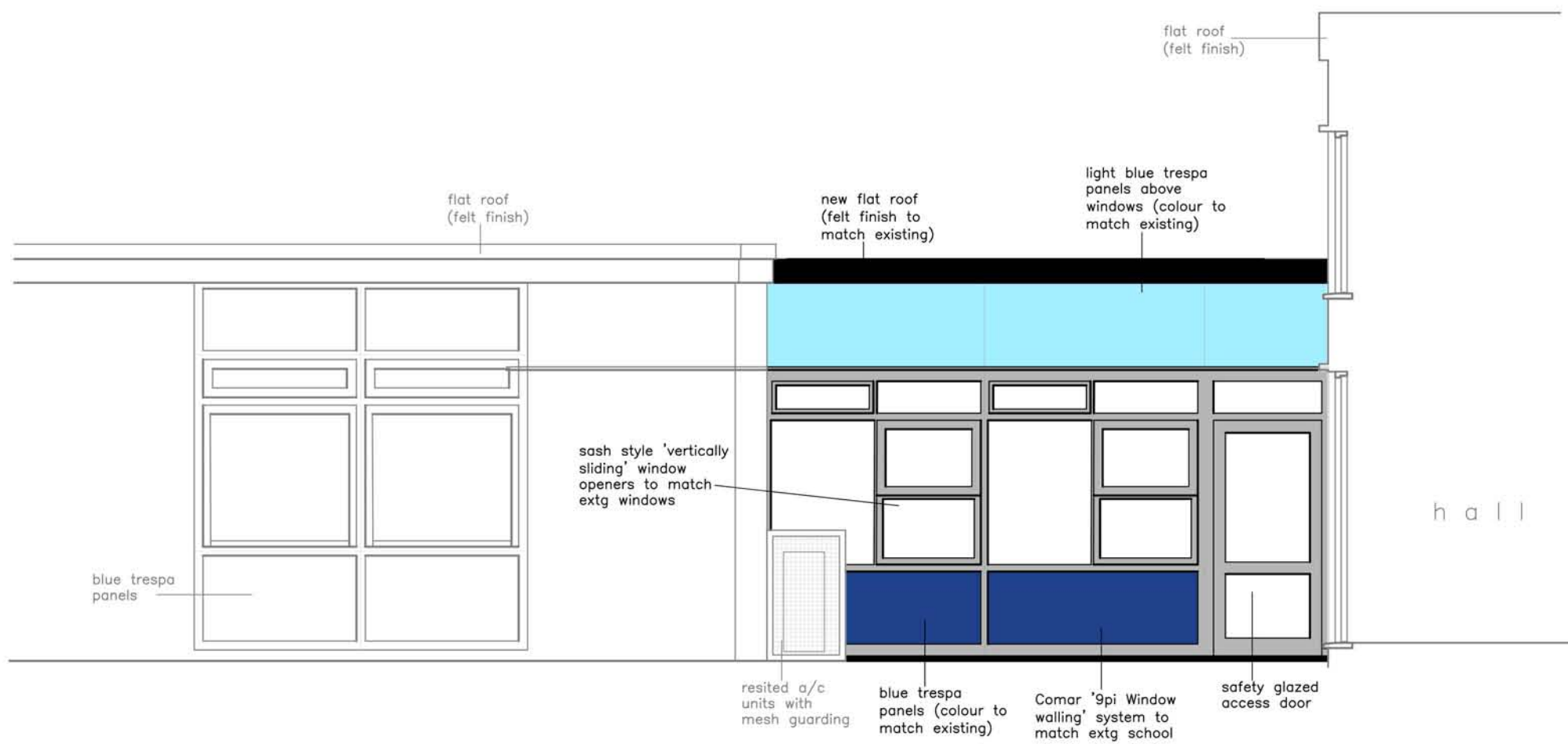
The proposal to provide a small extension to the front of the existing school will enable the School to meet current educational requirements in providing a Special Educational Needs (SEN) group room. The proposed SEN group room is a single storey extension located adjacent to the school main entrance, making use of an un-used external area.

This proposed extension also allows for first aid facilities to be resited in an unused courtyard to the rear of the school reception area, which in turn allows the School Hall to be increased in size (within the existing school envelope) to provide for temporary increase in pupil numbers.

The proposed external materials are to match the existing main school to ensure that this addition remains in keeping with the surrounding character, with blue cladding panels and glazed walling system to match.



west elevation / main entrance



east elevation



section b-b / west elevation