

CEDAR HALL SCHOOL



Site Location Plan - NTS

Brief

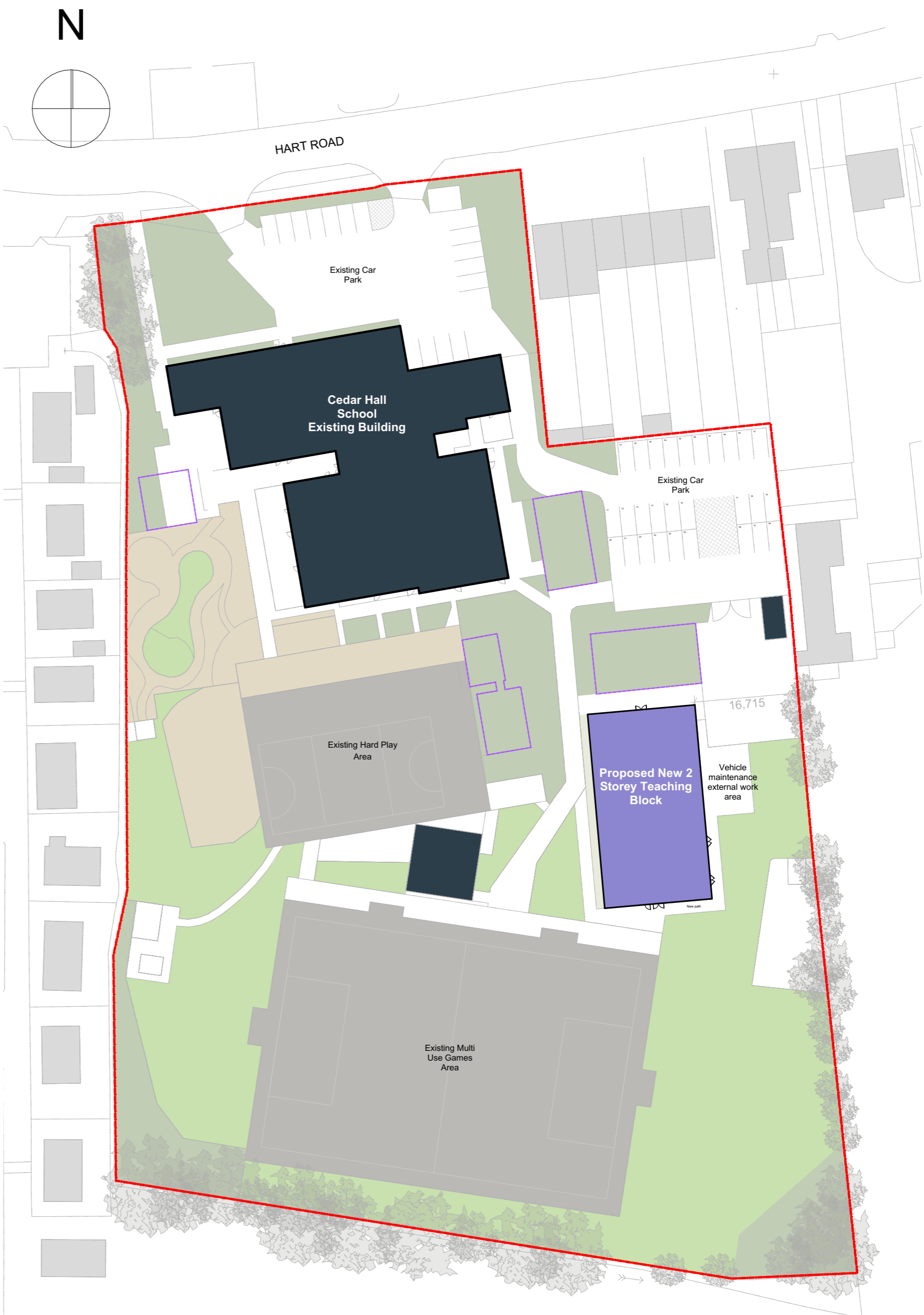
Cedar Hall School is located to the north of Benfleet. The existing school operates as a specialist Special Educational Needs & Disabilities (SEND) facility for Moderate Learning Disability (MLD) and Severe Learning Disability (SLD) students aged between 4 and 16 years.

The project scope is to construct a new two-storey building to replace the 4no. existing temporary demountable buildings, also known as 'RLs'. The RL's are proposed to be demolished and removed from the school site after construction of the new, permanent accommodation has been completed.

Project is proposed to be completed by August 2023



Existing Site Plan - NTS



Proposed Site Plan - NTS

Key

Soft Informal & Social Play

Hard Outdoor PE

Hard Informal & Social Play

Landscape

Existing Buildings

Relocatable

Proposed Buildings

Site Boundary

Removal of Existing Relocatables

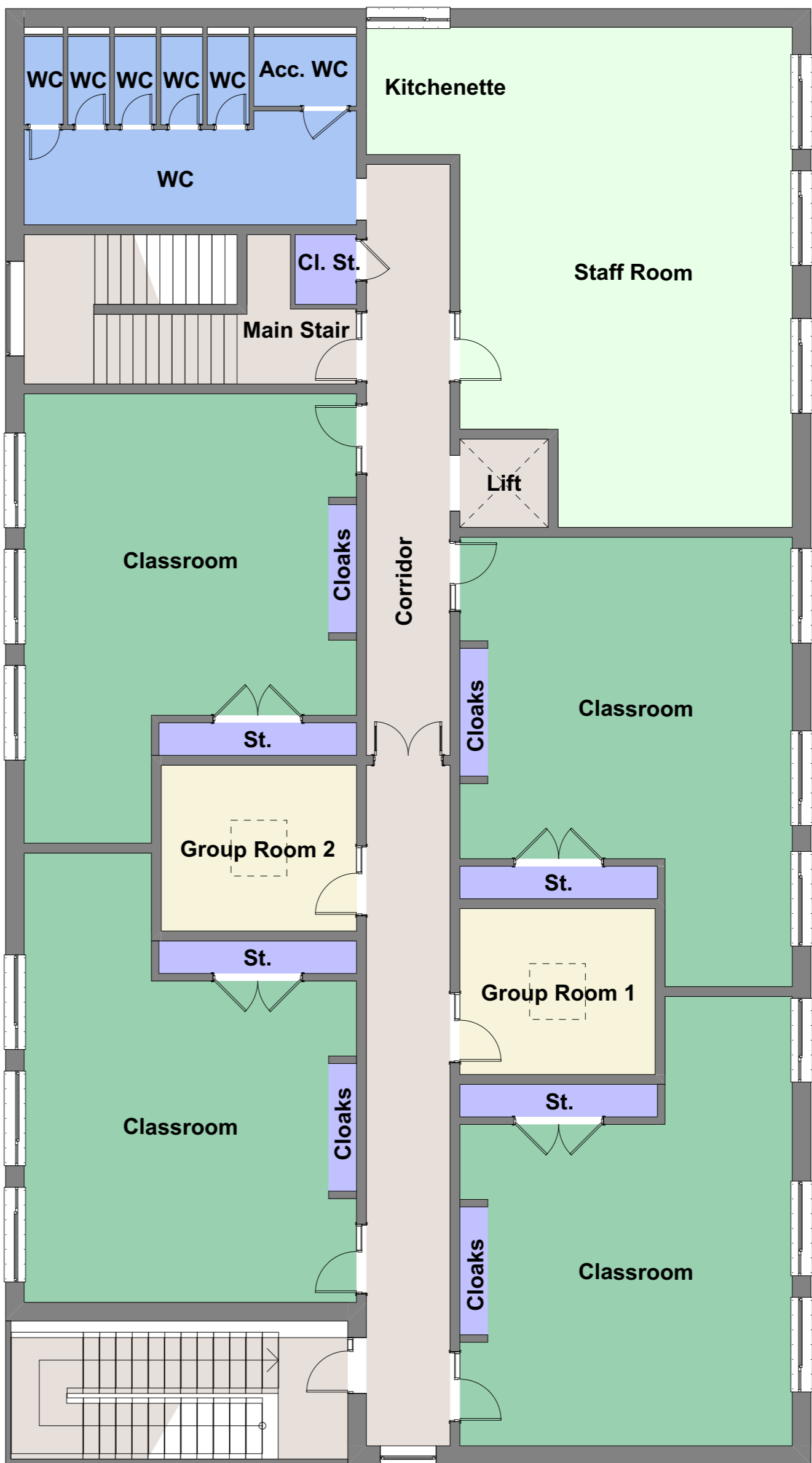
CEDAR HALL SCHOOL

Key

Plant	Library/ ICT
WCs	Group Room
Classbase	Circulation
Store	Office



Proposed Ground Floor Plan - NTS



Proposed First Floor Plan - NTS

SCALE 1:50 0 1000 2000 3000mm



Example Interiors

CEDAR HALL SCHOOL



Artist Impression



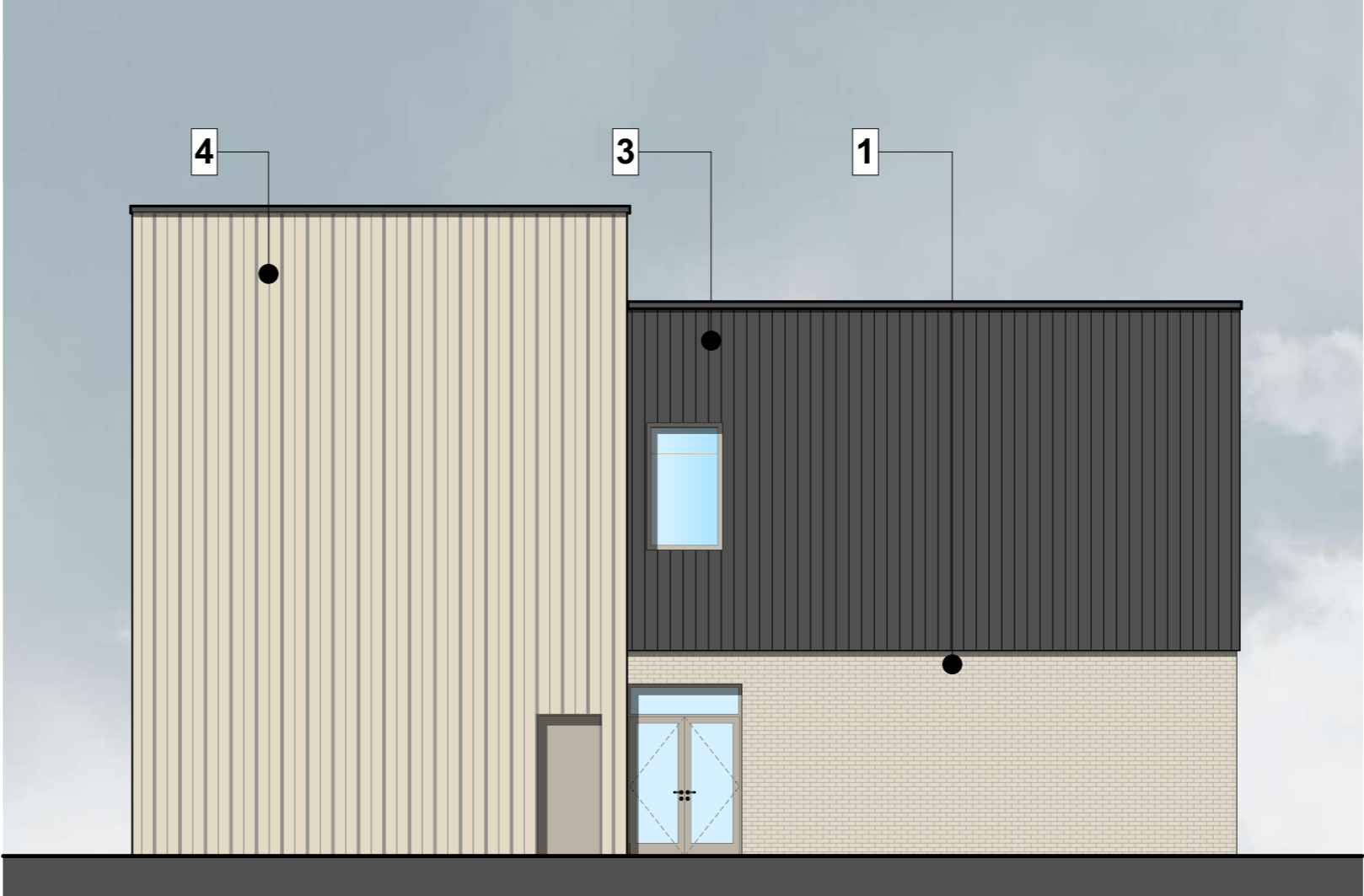
East Elevation - 1:100



West Elevation - 1:100

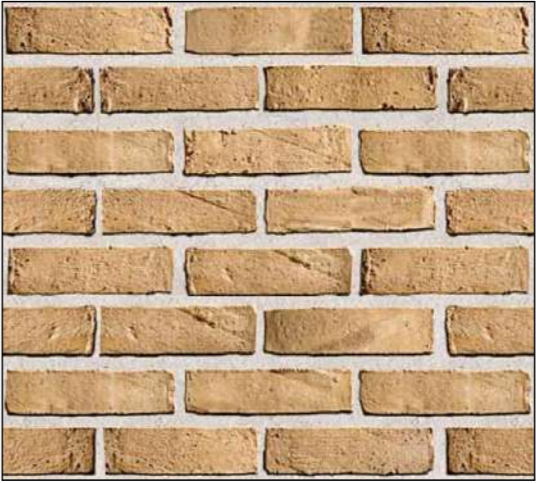


North Elevation - 1:100



South Elevation - 1:100

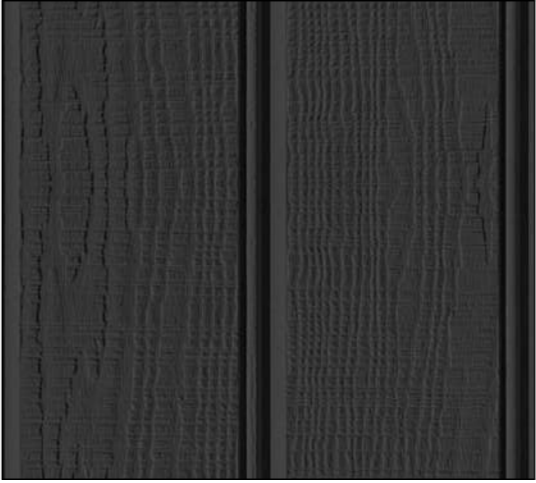
Indicative Materials Palette



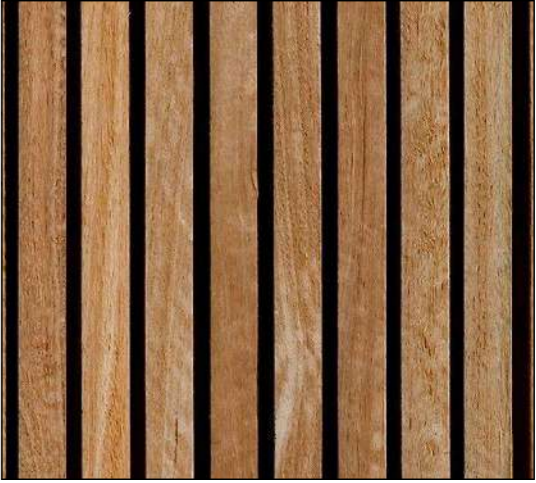
1 - Facing Brickwork



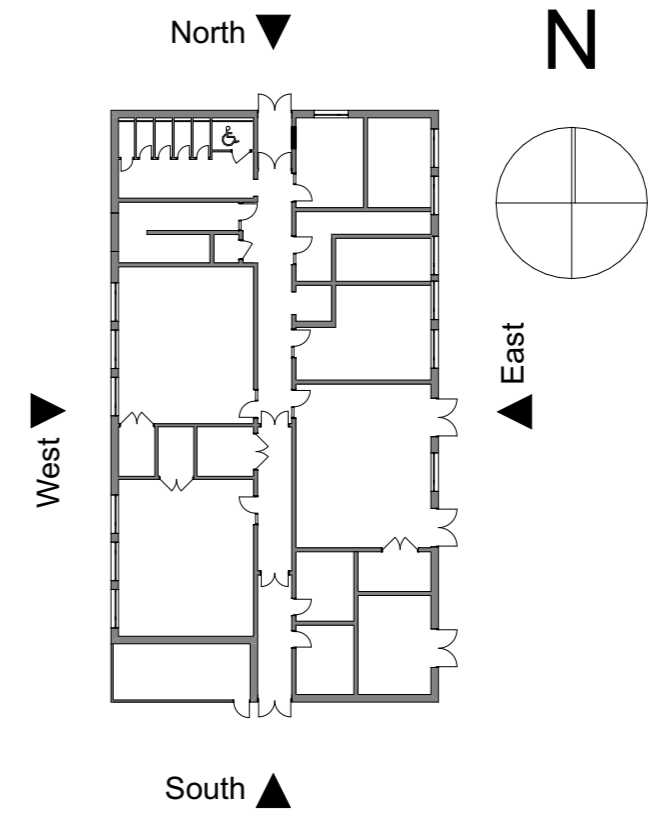
2 - Horizontal Cladding



3 - Vertical Cladding



4 - Timber Hit & Miss Cladding



Elevation Key Plan - NTS