



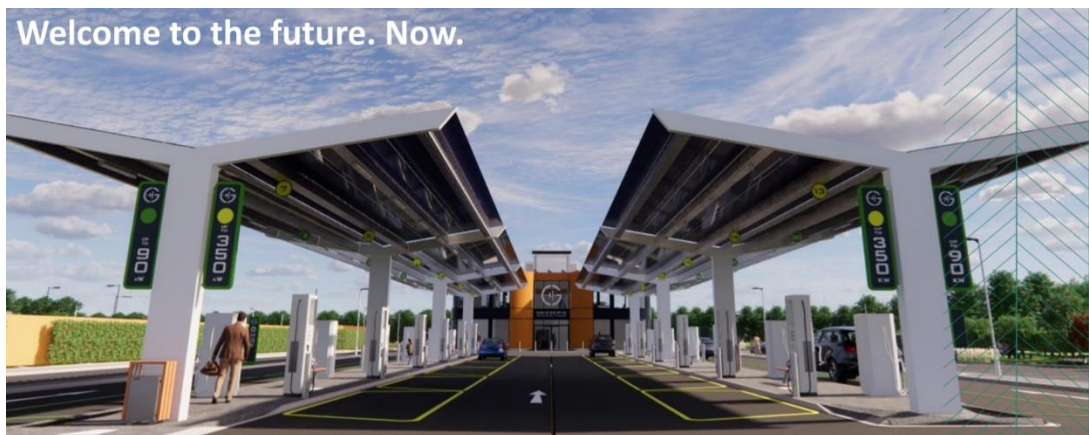
## **Community Energy and the Great Notley Sustainable Transport Revolution!**

**Did you know that Great Notley will soon be leading the way in a sustainable transport revolution?**

You may have heard that from 2035 you will no longer be able to buy a new petrol, diesel or hybrid car in the UK, under government plans. This means that electric vehicles will soon need to be the norm and our national charging infrastructure will need to develop massively. The switch to using electric vehicle is an essential part of responding to the climate crisis. Currently a fifth of our carbon emissions come from road transport in the UK.

Great Notley will be leading the way in the electric vehicle revolution when The Braintree Electric Forecourt® opens in November 2020. It will be the first of around 100 electric vehicle forecourts planned in the next 5 years by GRIDSERVE. It will make charging electric vehicles much faster and as simple as using petrol stations so that range or charging anxiety becomes history. 100% of the electricity used to charge vehicles will be net zero carbon.

The Braintree Electric Forecourt® will feature 'Best of British' retail partners, a comfortable lounge with free, super-fast wifi, electric vehicle showcase, meeting pods, quiet working areas a kid's area and wellbeing zone. Charging your car will be a completely new and welcome experience.



**Inspired? Let's do more on climate change locally!**

By 2050 we must have brought UK carbon emissions to Zero. Switching to electric vehicles is a big part of that but more needs to be done. Essex County Council wants to see the Braintree Electric Forecourt® become a springboard for community-led energy projects in the area.



Essex County Council have teamed up with Community Energy South to help communities in and around Great Notley to develop community led energy projects. Community energy projects include low carbon transport, renewable energy, energy efficiency and fuel poverty projects that benefit the local community.

### **Let us know what you think**

Please let us know what you think about taking action on climate change in your local community by completing the short survey that we have sent you a link to. The information will be used to help support local people to take local action on climate change and develop community energy projects.

### **Be part of the change**

On Tuesday 17<sup>th</sup> November at 7.30pm Essex County Council, GRIDSERVE and Community Energy South will be hosting an online event to let you know more about Community Energy and the Great Notley Sustainable Transport Revolution. Join us to find out:

- What is Essex County Council doing to tackle the climate crisis?
- What can the Braintree Electric Forecourt<sup>®</sup> offer the local community and why is it so important?
- What is community energy all about and what support is available in your area to help your local community take action on climate change?

[Book your free ticket here](#)

### **Find out more**

You can find out more information about Community Energy through [Community Energy South](#) and [Community Energy England](#). Community Energy South, in partnership with Essex County Council have also produced a [first steps 'pathway' guide to community energy in Essex](#).

Take a look at some of the media coverage for the Braintree Electric Forecourt<sup>®</sup>:

- ITV Anglia – You can view and download a full recording of the interview [here](#).
- ACAP Mag – [Business pods, high-speed wifi and coffee at the UK's first EV-only service station](#)
- Petrol World – [UK: Gridserve Unveils UK's First Electric Forecourt](#)