



ESSEX SUMMER OF ART

MAY – OCTOBER 2019



Susan Clare, Grunt on the Reef



Essex County Council

Welcome to Essex Summer of Art 2019 showcasing artists from across the county from May to October.

Now in its 11th year, Essex Summer of Art promotes exciting opportunities to visit art trails, artist studios, workshops and events from Harlow to Harwich.

Firm favourites in the Essex Summer of Art calendar make a return for 2019 including the Essex Craft and Design Show whilst the programme also welcomes new arrivals such as the Spirit of Essex festival which takes place across Essex's country parks this June..

Since 2008 the programme has supported over 8,000 artists to exhibit in 2,700 venues, making it the largest visual arts festival in Essex.

Essex Summer of Art is delivered by Essex County Council's Culture and Community Engagement Team in partnership with Visit Essex, participating City, Districts, Borough and Unitary authorities and the many varied art trails and artist studios of Essex.

For more information visit www.visitessex.com/ESOA-ENAS



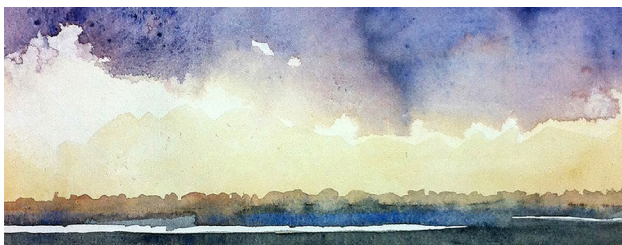
Contents

SUMMER OF ART EVENTS

The Essex Craft & Design Show	2
Island Artists On Mersea	3
37 Queen Street Open Studios & Artists Markets	3
Visit Parks - Spirit of Essex Festival	4
Colchester Maker Space	4
Leigh Art Trail	4
Brentwood Art Trail	5
Chelmsford Art Trail	5
The Harwich Festival	5
Burnham Art Trail	6
86 Ft High Summer Exhibition	6
Thurrock Art Trail	6
Hylands Artists – Summer Exhibition	7
Essex Schools Showcase for The Arts	7
Parndon Mill Open Studios	7
Waltham Abbey Art Trail	8
Hadleigh Old Fire Station Open-to-All Weekend	8
Rochford Arts Festival	9
Ardleigh Open Studios	9
Jaywick Coastal Open	9
Gatehouse Arts Open Studio Exhibition	9

SUMMER OF ART

Visit Essex	10
If you love the arts – Shout about it!	11
Win a Prize!	11



Island Artists: Sunlight over Marshes

SUMMER OF ART EVENTS

THE ESSEX CRAFT & DESIGN SHOW 3 – 6 May (BH Monday) 1 – 4 August (Made in Essex Show)

➡ **RHS Garden Hyde Hall, Creep hedge
Lane, Rettendon CM3 8ET**

🕒 10am–5pm

☎ 07944 806340

🌐 www.essexcraftanddesignshow.com

@ info@essexcraftanddesignshow.com

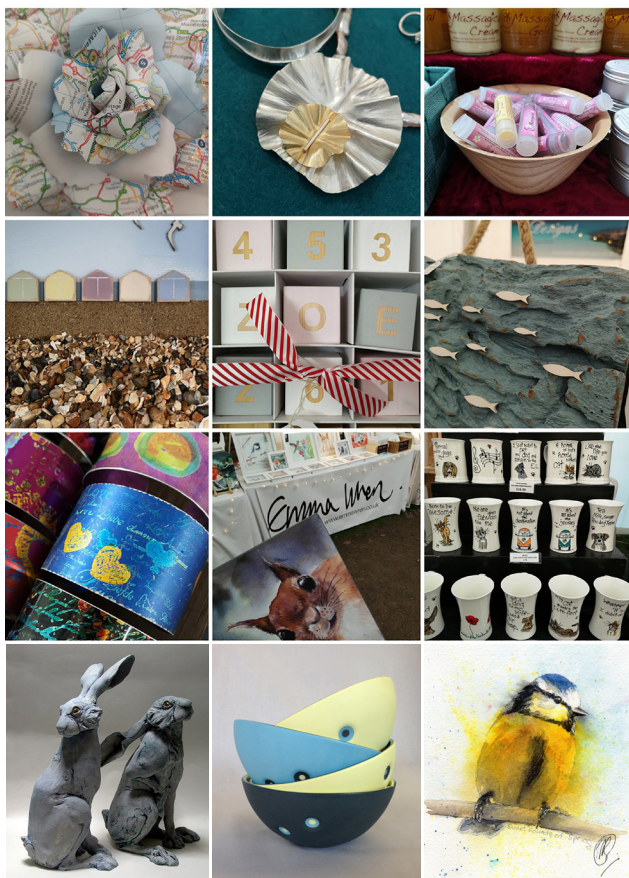
the
essex
craft & design
show



Sharing the best in Gardening

Celebrating the best in contemporary craft, art and design.

This is more than just a craft show. All work is designed and made by exhibitors; giving you the opportunity to meet working artists, buy unique pieces of work and in turn support the arts within Essex.



ISLAND ARTISTS ON MERSEA

31 May – 2nd June

👉 For event locations please visit our website.

🕒 Please check our website for opening times.

☎ 01206 385 141

🌐 www.island-artists.uk

@ IslandArtists@mail.com

The Island Artists welcome visitors to their studios in West Mersea and rural East Mersea. See the artists at work and displays of finished pieces in many different media, both 3D and 2D and explore beautiful, historic Mersea Island with its beaches, cafes and wildlife.



James Weaver, Light over Salt Marsh



James Weaver Wreck on the Marsh

37 QUEEN STREET OPEN STUDIOS & ARTIST MARKETS

1 June, 7 July & 28 September

👉 37 Queen Street, Colchester, Essex, CO1 2PQ.

🕒 SPACE Colchester Artist Markets:

1 June and 28 September 10am – 4pm

SPACE Colchester Open Studios: 7 July 11.am – 4pm

☎ 01206 809222

🌐 www.spacestudios.org.uk

@ jack@spacestudios.org.uk

37 Queen Street provides 38 studios and a shared co-working space for artists, and creative businesses working in and around Colchester. This Summer they will be hosting a series of events including, Artist Markets, Open Studios, Tenant led workshops & peer-peer feedback sessions

37QUEENST



37 Queen street studios, Jack Briggs-Miller

SUMMER OF ART EVENTS

VISIT PARKS - SPIRIT OF ESSEX FESTIVAL

1 – 30 June

👉 For event locations please visit our website.

🕒 Please check our website for opening times.

☎ 0345 603 7624

🌐 www.visitparks.co.uk

@ essex.countryparks@essex.gov.uk

New for 2019! An exciting series of events running throughout June aimed at celebrating the fantastic green spaces and heritage places that Essex has to offer, with a focus on our connection with our environment as well as entertainment for all the family set in beautiful outdoor locations. Events include Yoga Unites, outdoor cinema screenings, outdoor theatre, Planet Essex and an Active Essex obstacle course.



Cressing Temple Barns



Mel - Yoga

COLCHESTER MAKER SPACE

1 June, 7 July & 28 September

👉 Trinity Works, 24 Trinity Street,
Colchester, CO11JN

🕒 Please check our website for opening times.

☎ 07870 552069

🌐 www.makercampus.co.uk

@ hello@makercampus.co.uk

Colchester MakerSpace is a community project providing affordable access to space and equipment for local artists and creatives.

Our Makers Market will showcase the work of our member's items for sale. In addition to this to mark 100 years of the founding of the Bauhaus Art School MakerSpace creatives will be responding to the style of the Bauhaus movement in their own mediums in celebration of this influential modernist art school.

COLCHESTER MAKERSPACE



Maker Space, Pottery

LEIGH ART TRAIL 8 - 15 June

👉 For event locations please visit our website.

🕒 Art Trail: 10am–5pm.

☎ 07788131771

🌐 www.leigharttrail.com

@ Leigharttrail0@gmail.com

Leigh's vibrant creative scene is given the run of the town, with 72 artists exhibiting a stunning range of works in shops, cafes, galleries, churches and two railway stations!.



Kerry Doyland

BRENTWOOD ART TRAIL

8 – 23 June 2019

👉 Please check our website for opening times and locations.

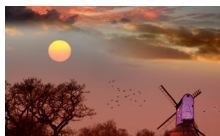
🐦 @BwdArtTrails

☎ 01277312774

🌐 www.brentwoodarttrail.co.uk

@ brentwoodarttrail@gmail.com

The 2019 Brentwood Art Trail will be a cultural celebration of the borough's arts and heritage, featuring Brentwood's many talented artists.



Dr Edmund Ranasinghe
Sunset over Mountnessing



Dr Edmund Ranasinghe
Super Moon over Brentwood

CHELMSFORD ART TRAIL

15 – 30 June 2019

👉 Moulsham Street, Chelmsford

🕒 Please check our website for opening times

☎ 01245 353825

🌐 www.chelmsfordfestival.org

@ chelmsfordarttrail@gmail.com

Chelmsford Art Trail 2019 will be centred around Chelmsford's historic Moulsham Street, featuring a wide range of artists work culminating in an open art exhibition at St Johns Church



Daisy Courtauld

THE HARWICH FESTIVAL

20 – 30 June 2019

👉 For event locations please visit our website.

🕒 Please check our website for opening times

☎ 074251 45022

🌐 www.harwichfestival.co.uk

@ michael.offord@harwichfestival.co.uk

An annual combined arts festival with a strong visual arts strand. A range of artwork will be displayed in many buildings around the old town complete with public art installations and Art Trails. You will also find music, spoken word, dance and art melding seamlessly as the Harwich Festival unfolds.



Roger Hamer

SUMMER OF ART EVENTS

BURNHAM ART TRAIL

22 – 30 June 2019

Art on the Quay 23 – 29 June 2019

📍 **Burnham on Crouch Town Centre CM0 8AA**

🕒 Art on the Quay Sun 23 June & Sat 29 June,
11.00am - 5.00pm on both days.

☎ 07741413534

🌐 **www.burnhamarttrail.co.uk**

@ **trissandsharon.burnhamarttrail@hotmail.com**

Burnham Art Trail celebrates its 15th anniversary this year offering visitors the opportunity to engage with the creative community. The popular 'Art on the Quay' weekend events and venues across town will display a host of originality, with artists opening their studios, giving demonstrations and chatting about their skills and influences that inform their work.



Sue Spiers en plein air

86FT HIGH: SUMMER EXHIBITION

22 June - 1 September

📍 **Naze Tower, The Naze, Old Hall lane,
Walton on the Naze, Essex CO14 8LE**

🕒 10am–5pm everyday

☎ 01255 852519

🌐 **www.nazetower.co.uk**

@ **mail@nazetower.co.uk**

As part of Essex Summer of Art the Naze Tower will showcase artists from the county with a trail that takes visitors 86ft upwards! The Naze Tower is an historic landmark that includes art galleries, a museum, tea rooms and a viewing platform with spectacular 360° views. Small admission charges apply, please check website for details.



Simon Carter. Quay Lane Sluice,
2017. Watercolour

THURROCK ART TRAIL

29 - 30 June

📍 **High Road, Horndon on the Hill.**

🕒 10.00am - 5.00pm

☎ 07931 796159

🌐 **www.thurrockarttrail.org.uk**

@ **info@thurrockarttrail.org.uk**

Following 2018's success, Thurrock Art Trail will again share a weekend with Horndon on the Hill Feast & Fayre the annual celebration in the heart of Thurrock originally granted by Royal Charter in the Middle Ages. Enjoy a showcase of contemporary and traditional art alongside a traditional village fair!"



Tim Harold, Detail from Triptych

HYLANDS ARTISTS' SUMMER EXHIBITION AND ART SQUARE SUNDAYS

Summer Exhibition 1 July -31 August
Art Square Sundays 7 July and 4 August

📍 **Stables Courtyard, Hylands Estate,
London Road, Chelmsford, CM2 8WQ**

🕒 Mon-Sat 11am-3pm Sun 11-4pm.

☎ 07521 199558

🌐 www.hylandsartists.co.uk

@ monamarnell@monamarnellglass.co.uk

Throughout July and August Hylands Artists will hold their first Summer Exhibition with work displayed in the Stables Bookshop Gallery and the studio complex. There will also be an 'Art Square Sunday' on the 7th July and 4th August where visitors can participate in a range of creative activities.



Nicky Gale Message in a bottle
Exhibition by Catherine Price

ESSEX SCHOOLS SHOWCASE FOR THE ARTS

10th - 17th July

📍 **Central Chelmsford at High Chelmer
& Civic Theatre.**

🕒 Please check our website for details.

☎ 07799 414270

🌐 www.essexschoolsarts.org

@ max.dolding@me.com

A stunning Visual Art and Performance programme created and hosted by Essex school students. Now in its 8th year Showcase is generously sponsored by High Chelmer Shopping Centre, James Hallam Insurance Brokers, Gepp Solicitors, BBC Essex, Chelmsford City Theatres & Chelmsford City Council.



2018 visual art display/Max Dolding

PARNDON MILL OPEN STUDIOS

20 -21st July

📍 **Parndon Mill, Elizabeth Way, Harlow,
Essex CM20 2HP**

🕒 10am – 5pm both days

☎ 01279 426042

🌐 www.parndonmill.co.uk/

@ info@parndonmill.co.uk

A talented and diverse community of artists, craftspeople, designers and architects occupy thirty studios at Parndon Mill in a delightful riverside setting. Skills range through the arts to architectural metalwork to making tutus! At the Open Studios Weekend there will be a chance to "have a go" at many of the crafts, including glass blowing, and, for the children, an Art Play Tent. The food is good too!"



SUMMER OF ART EVENTS

WALTHAM ABBEY ART TRAIL

10 August - 26 August

➡ **Various locations around Waltham Abbey town centre**

🕒 Please check our website for opening times.

☎ 01375 374786 07713 327380

🌐 www.walthamabbeyarttrail.wordpress.com

@ WalthamAbbeyArtTrail@outlook.com

The historic and beautiful town of Waltham Abbey will be hosting its first art trail this year. Town centre businesses will showcase art works by talented local artists. Come and enjoy the art and take the opportunity to experience the rich heritage of Waltham Abbey.



HADLEIGH OLD FIRE STATION OPEN STUDIOS WEEKEND

7 - 8 September

➡ **Hadleigh Old Fire Station, High Street,
Hadleigh Benfleet, Essex SS7 2PA**

🕒 10 am – 5pm each day

☎ 07769 582 723

🌐 www.hofs.org.uk

@ b.hickey990@btinternet.com

Come and meet the hard-working artists and community groups based at Hadleigh Old Fire Station. See work in progress, find out about the range of artistic practices and discover the work of community groups. An exhibition of artists' work will be held in the Appliance Hall.



Emma Mower Work no. 131

ROCHFORD ARTS FESTIVAL

12 - 26 September

➡ **Various, please refer to website.**

🕒 Various, please refer to website.

☎ 01702540722

🌐 www.rochfordparishcouncil.gov.uk/

[rochford-art-trail](#)

@ rochfordartsfestival@gmail.com

can this section read: 'Rochford Arts Festival will take place over two weeks encompassing the Rochford Art Trail, an established, award-winning event on the Essex cultural calendar. Now in its eleventh year, the ArtTrail showcases local art, craft and design in shops, businesses and public spaces around the historic market town Rochford.



Barry Rust

ARDLEIGH OPEN STUDIOS

21- 22 September

📍 **Ardleigh Studios, Station Road,
Ardleigh, Essex, CO7 7RT**

🕒 11am to 5pm each day

☎ 07377 341827

🌐 **www.acava.org**

@ **ardelighstudios@gmail.com**

Artists working in Ardleigh Studios invite visitors to see their work in the place where it was created as part of this Open Studios event in the small village of Ardleigh, 5 miles from Colchester.

Ardleigh Studios 



David Downes - Artist at work

JAYWICK COASTAL OPEN

Thursday 12 September -

Sunday 27 October

📍 **Jaywick Martello Tower
Belsize Avenue Jaywick CO15 2LF**

🕒 Summer Opening (April until September)

Wednesday to Sunday and Bank Holiday

Mondays - 10am - 5pm Winter Opening

(October and March) Saturdays and

Sundays -10.30am -3.30pm

☎ 01255 822783

🌐 **www.jaywickmartellotower.org**

@ **jaywickmartellotower@hotmail.co.uk**

Our annual Coastal Open is now celebrating its tenth year!

Join us and celebrate local artists and their artwork with displays of painting, photography, sewing, ceramics and more! Entry into the exhibition is open to all!



Laura Ward, Beach Huts

GATEHOUSE ARTS OPEN STUDIOS AND GATEHOUSE OPEN STUDIO GROUP EXHIBITION

5- 6 October

📍 **Gatehouse Arts 5 Eastgate,
Harlow, CM20 1HP**

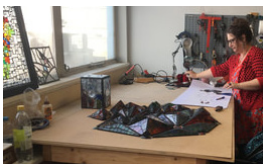
🕒 11-4pm

🌐 **www.Gatehousearts.com**

@ **gatehouse@mail.com**

Gatehouse Arts: The biggest artist's studio in Essex, providing spaces for 45+ artists and a gallery with a programme

of exciting exhibitions. During the open studio weekend visit the working spaces, watch new works being created, talk to the makers and buy artworks directly from the artists.



Muna Zuberi in her studio

SUMMER OF ART

VISIT ESSEX

Visit Essex is a membership organisation made up of Essex's many and varied attractions, restaurants, hotels and B&B's. Their key aim is to raise awareness of Essex as a great destination, nationally and internationally. Through their support they have helped make Essex Summer of Art one of the key annual cultural events.



Hyde Hall Gardens



Layer Maney Tower



Mistley Waters



Hadleigh Park

Why not discover this exciting and diverse region. Essex is the perfect place for some great days out and weekend breaks that'll leave a lasting impression. Go to www.visitessex.com for ideas for a great day out in Essex.



Frinton on Sea

IF YOU LOVE THE ARTS – SHOUT ABOUT IT!

Essex Summer of Art is devised and managed by volunteer groups and artists alongside local councils. In these hard economic times councils are under pressure to save money, which has resulted in reduced funding for the arts. Now more than ever it is important to demonstrate how the creative industries contribute to the economy both locally and nationally. Every art trail, exhibition event and artist studio is involved in collecting these forms, which not only help to improve the programme but will help make the case that the arts are vital to the cultural and economic life of Essex.”

WIN A PRIZE!

Your art trail and ENAS Event needs YOU!

Please complete an evaluation form, it should take no more than two minutes to show how arts and culture are valuable to you and your local area. Tell us what you think and you could win a fabulous prize! Four tickets to the 2019 New Hall Vineyards Wine Festival, hosted by one of Essex’s finest award winning vineyards.

You can complete the evaluation online:

www.visitessex.com/ESOA-ENAS or hand your form into your art trail or ENAS Events representative.



Downhall



Cream Tea at Down Hall



Cream Tea at Down Hall

SUMMER OF ART EVENTS

TRAIL MAP





This information is issued by:

**Essex County Council
Culture and Community
Engagement Team**

Contact us:

**culture@essex.gov.uk
www.essex.gov.uk
0845 603 2200**

**Culture and Community
Engagement Team**

Essex Record Office,
Wharf Road, Chelmsford,
Essex, CM2 6YT

Sign up to Keep Me Posted
email updates:

essex.gov.uk/keepmeposted



Essex_CC



facebook.com/essexcountycouncil

The information contained in this
document can be translated, and/
or made available in alternative
formats, on request.

Published April 2019.